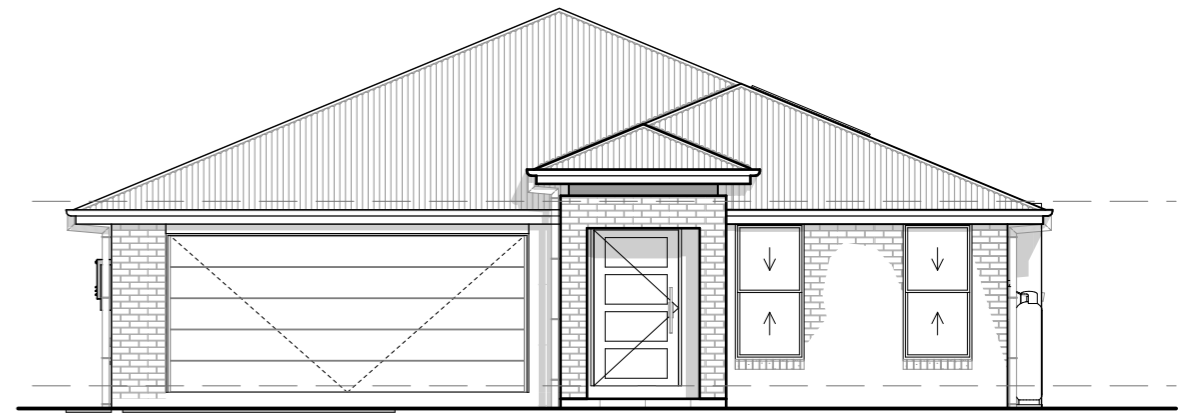


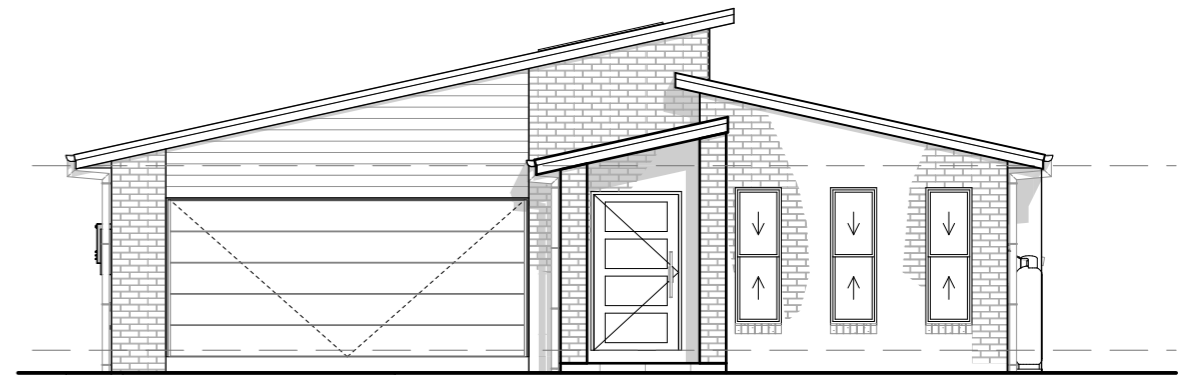
NOVA 229 LHG FLOOR PLAN  
SCALE 1:100



NOVA 229 P W01 LHG  
SCALE 1:100



NOVA 229 RP W02 LHG  
SCALE 1:100



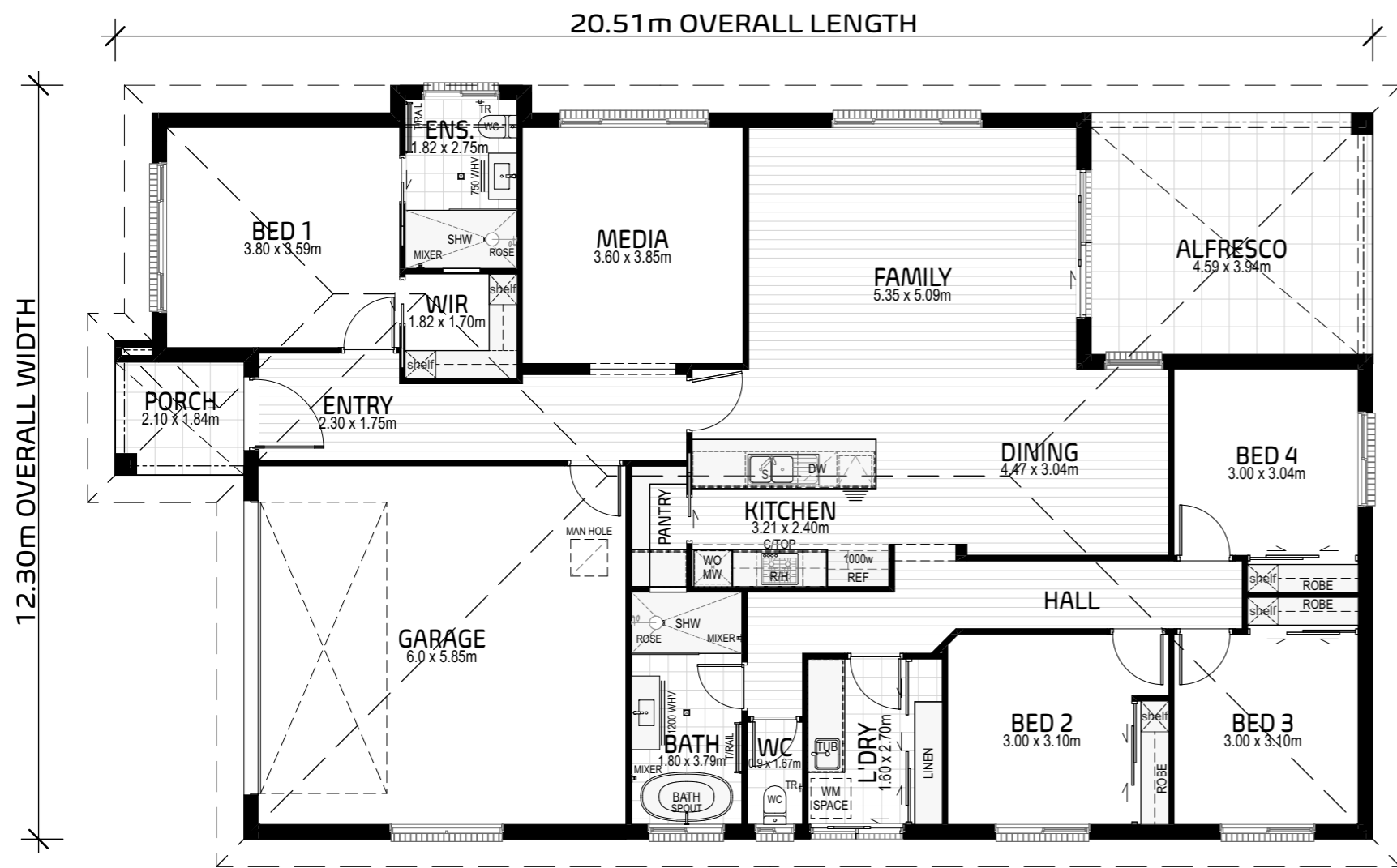
NOVA 229 S W03 LHG  
SCALE 1:100

AREAS	
PORCH	4.07
LIVING	169.27
GARAGE	37.94
ALFRESCO	18.08
<b>TOTAL</b>	<b>229.36 m<sup>2</sup></b>
PERIMETER	64.42 Lm



Address:  
130 West High Street  
Coffs Harbour NSW 2450  
Hibbards P/L ABN 22 057 895 020  
E: coffs@hibbards.com.au  
P: (02) 6650 3300  
F: (02) 6651 7044  
W: www.hibbards.net.au

drawing title		NOVA 229 LHG SALES PLAN	
JOB No.	0000	revision	A
SCALE	1:100 <small>printed to A3 size</small>		
DRAWN	RG		PAGE
DATE	24/2/2026		<b>S01</b>
WIND	'N2'	SITE	



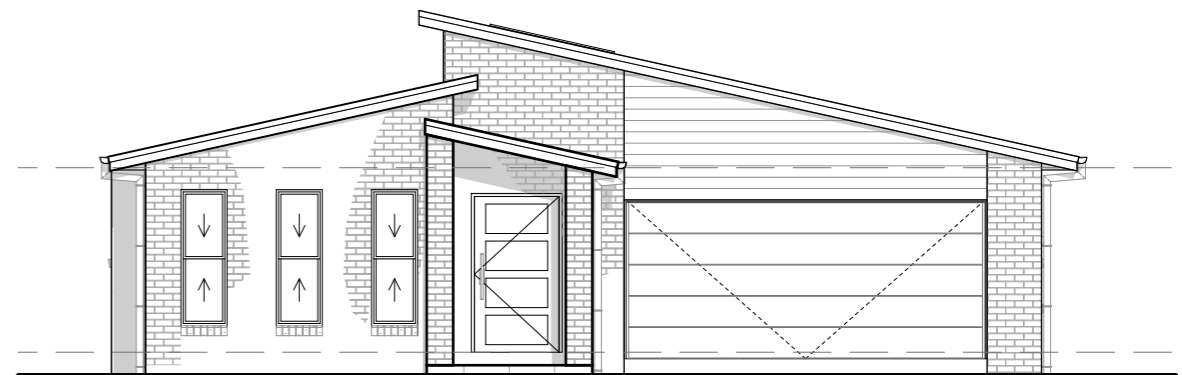
NOVA 229 RHG FLOOR PLAN  
SCALE 1:100



NOVA 229 P W01 RHG  
SCALE 1:100



NOVA 229 RP W02 RHG  
SCALE 1:100



NOVA 229 S W03 RHG  
SCALE 1:100

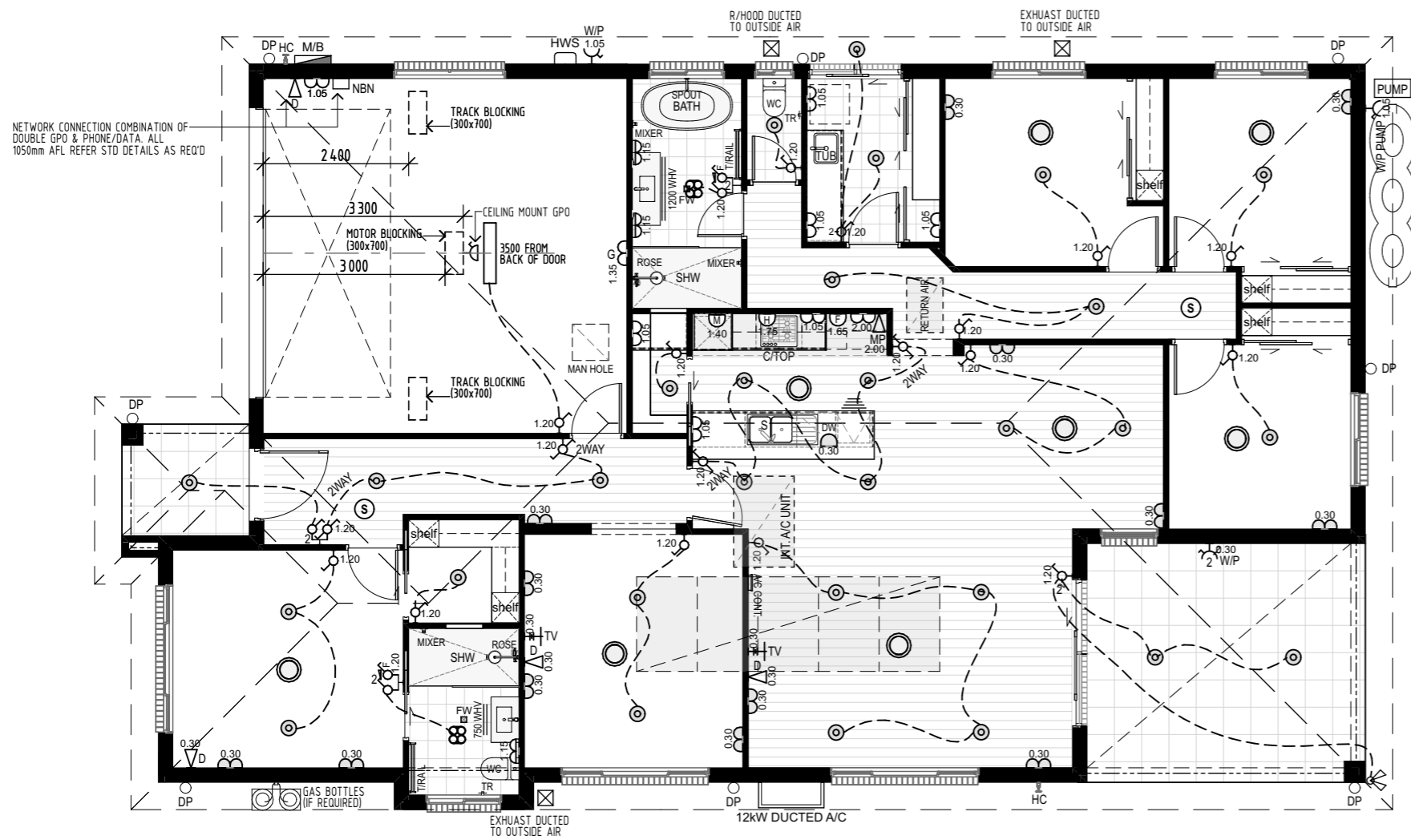
AREAS	
PORCH	4.07
LIVING	169.27
GARAGE	37.94
ALFRESCO	18.08
<b>TOTAL</b>	<b>229.36 m<sup>2</sup></b>
PERIMETER	64.42 Lm



Address:  
130 West High Street  
Coffs Harbour NSW 2450  
Hibbards P/L ABN 22 057 895 020  
E: coffs@hibbards.com.au  
P: (02) 6650 3300  
F: (02) 6651 7044  
W: www.hibbards.net.au

drawing title NOVA 229 RHG SALES PLAN

JOB No.	0000	revision	
SCALE	1:100 <small>printed to A3 size</small>		<b>A</b>
DRAWN	RG		PAGE
DATE	24/2/2026		<b>S01</b>
WIND	'N2'	SITE	



NOVA 229 LHG ELECTRICAL LAYOUT  
SCALE 1:100

**NOTE :** PLEASE NOTIFY THE DRAFTING DEPARTMENT AT HIBBARDS HEAD OFFICE FOR ANY DISCREPANCIES IN DETAILS & DIMENSIONS

THIS IS A GENERIC ELECTRICAL PLAN ONLY. THE LAYOUT, LOCATION OF POINTS, LIGHTS AND OUTLETS SHOWN MAY ALTER WITHOUT NOTIFICATION, DUE TO COUNCIL REQUIREMENTS, BUILDING LOCATION AND/OR OTHER UNFORSEEN CIRCUMSTANCES

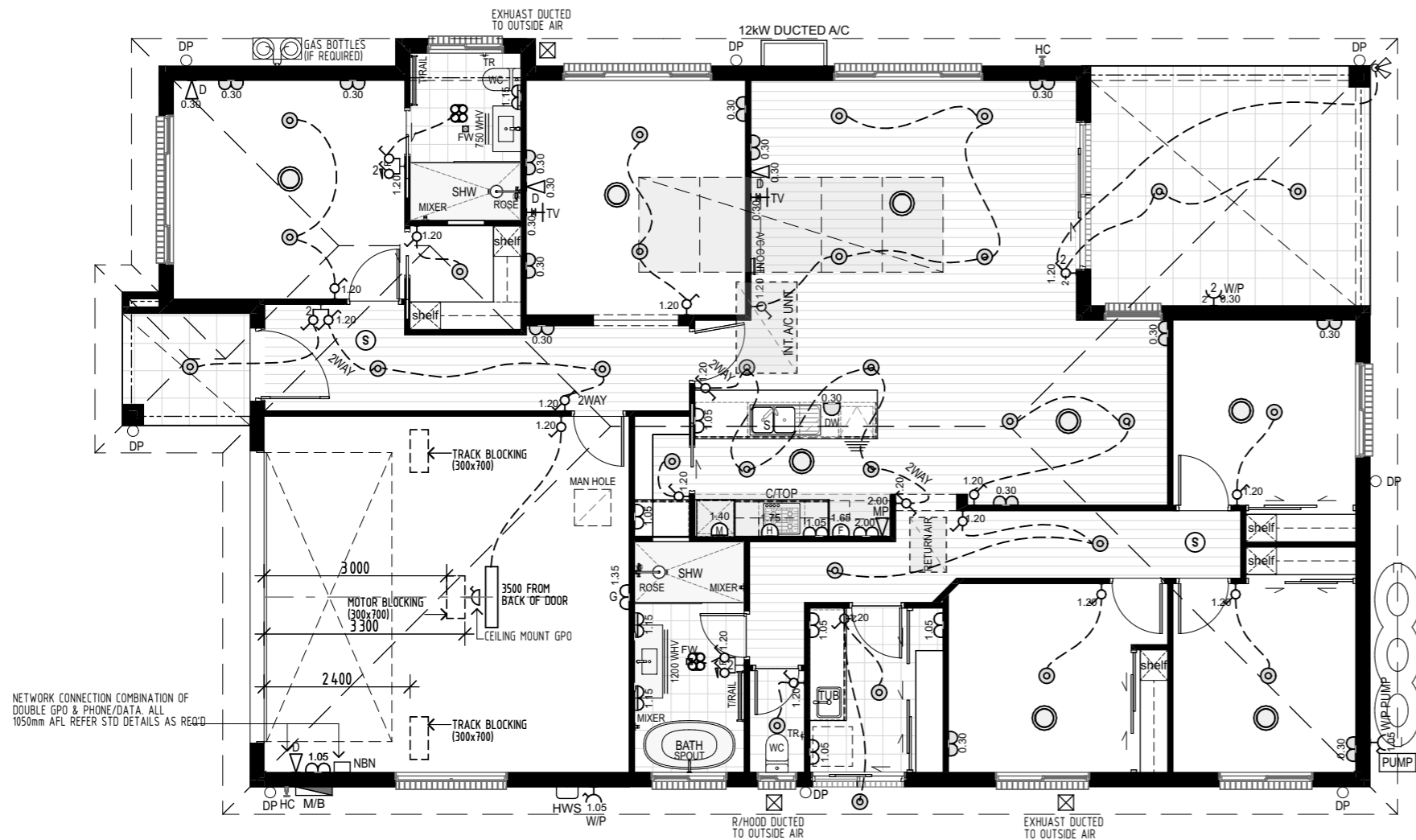
**ALL PRODUCTS AND FINISHES AS PER BUILDERS SPECIFICATIONS**

**NOTE :** ALL EXTERNAL LIGHTS WILL BE SHIELDED TO PREVENT LIGHT ABOVE HORIZONTAL

HOME OFFICE HO-ELECTRICAL/LIGHTING SCHEDULE		
SYMBOL	DESCRIPTION	QUANTITY
	3 HEATLAMP/LIGHT & EXHAUST FAN	2
	A/C CONT.	1
	A/C DIFFUSER	8
	DATA AT 300mm AFL	3
	DATA AT 1050mm AFL	1
	DOUBLE GPO AT 300mm AFL	13
	DOUBLE GPO AT 1050mm AFL	7
	DOUBLE GPO AT 2000mm AFL	1
	DOUBLE GPO-GARAGE AT 1350mm AFL	1
	DOUBLE GPO-VANITY AT 1150mm AFL	3
	DOUBLE SPOTLIGHT	1
	DOUBLE WATERPROOF GPO AT 300mm AFL	1
	DOWNLIGHT	29
	DUCTED GRILL	3
	FLURO LIGHT	1
	MODEM POINT AT 2000mm AFL	1
	SINGLE GPO-CEILING MOUNT	1
	SINGLE GPO-DISHWASHER AT 300mm AFL	1
	SINGLE GPO-FRIDGE AT 1650mm AFL	1
	SINGLE GPO-MICROWAVE AT 1400mm AFL	1
	SINGLE GPO-R/HOOD AT 1750mm AFL	1
	SINGLE WATERPROOF GPO AT 1050mm AFL	4
	SMOKE ALARM	2
	SWITCH - DOUBLE	2
	SWITCH - DOUBLE (INC 2WAY)	1
	SWITCH - DOUBLE (INC EXHAUST FAN)	2
	SWITCH - SINGLE	12
	SWITCH - SINGLE (2WAY)	3
	TV AT 300mm AFL	2

**HibbardHomes** est 1968  
 FIRST NEXT INVEST  
 Address: 130 West High Street, Coffs Harbour NSW 2450  
 Hibbards P/L ABN 22 057 895 020  
 E: coffs@hibbards.com.au  
 P: (02) 6650 3300  
 F: (02) 6651 7044  
 W: www.hibbards.net.au

drawing title		NOVA 229 LHG ELECTRICAL LAYOUT	
JOB No.	0000	revision	A
SCALE	1:100 <small>printed to A3 size</small>	PAGE	S02
DRAWN	RG	DATE	24/2/2026
WIND	'N2'	SITE	



**NOVA 229 RHG ELECTRICAL LAYOUT**  
SCALE 1:100

**NOTE :** PLEASE NOTIFY THE DRAFTING DEPARTMENT AT HIBBARDS HEAD OFFICE FOR ANY DISCREPANCIES IN DETAILS & DIMENSIONS

THIS IS A GENERIC ELECTRICAL PLAN ONLY. THE LAYOUT, LOCATION OF POINTS, LIGHTS AND OUTLETS SHOWN MAY ALTER WITHOUT NOTIFICATION, DUE TO COUNCIL REQUIREMENTS, BUILDING LOCATION AND/OR OTHER UNFORSEEN CIRCUMSTANCES

**ALL PRODUCTS AND FINISHES AS PER BUILDERS SPECIFICATIONS**

**NOTE :** ALL EXTERNAL LIGHTS WILL BE SHIELDED TO PREVENT LIGHT ABOVE HORIZONTAL

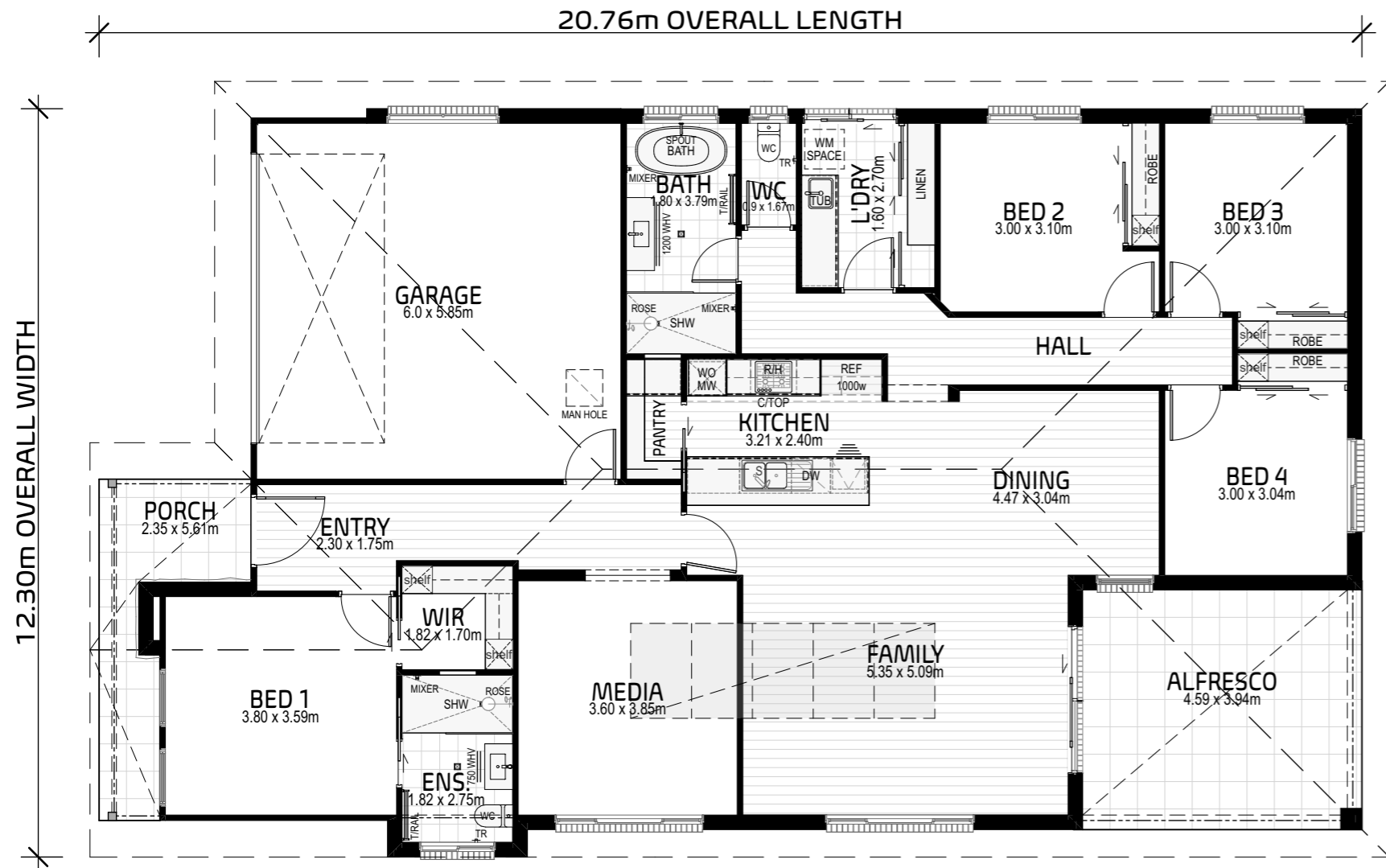
ELECTRICAL/LIGHTING SCHEDULE		
SYMBOL	DESCRIPTION	QUANTITY
⊗	3 HEATLAMP/LIGHT & EXHAUST FAN	2
INCO 3W	A/C CONT.	1
⊙	A/C DIFFUSER	8
D 0.30	DATA AT 300mm AFL	3
▽ 1.05	DATA AT 1050mm AFL	1
B 0.30	DOUBLE GPO AT 300mm AFL	13
B 1.05	DOUBLE GPO AT 1050mm AFL	7
B 2.00	DOUBLE GPO AT 2000mm AFL	1
G 1.35	DOUBLE GPO-GARAGE AT 1350mm AFL	1
B 1.15	DOUBLE GPO-VANITY AT 1150mm AFL	3
⊗	DOUBLE SPOTLIGHT	1
WP 2 0.30	DOUBLE WATERPROOF GPO AT 300mm AFL	1
⊙	DOWNLIGHT	29
⊗	DUCTED GRILL	3
▭	FLURO LIGHT	1
2.00	MODEM POINT AT 2000mm AFL	1
IN CEILING	SINGLE GPO-CEILING MOUNT	1
DW 0.30	SINGLE GPO-DISHWASHER AT 300mm AFL	1
F 1.65	SINGLE GPO-FRIDGE AT 1650mm AFL	1
M 1.40	SINGLE GPO-MICROWAVE AT 1400mm AFL	1
R 1.75	SINGLE GPO-R/HOOD AT 1750mm AFL	1
WP 1.05	SINGLE WATERPROOF GPO AT 1050mm AFL	2
S	SMOKE ALARM	2
2 1.20	SWITCH - DOUBLE	2
2WAY 1.20	SWITCH - DOUBLE (INC 2WAY)	1
⊗ 1.20	SWITCH - DOUBLE (INC EXHAUST FAN)	2
1.20	SWITCH - SINGLE	12
2WAY 1.20	SWITCH - SINGLE (2WAY)	3
TV 0.30	TV AT 300mm AFL	2

**HibbardHomes** est 1968  
FIRST NEXT INVEST

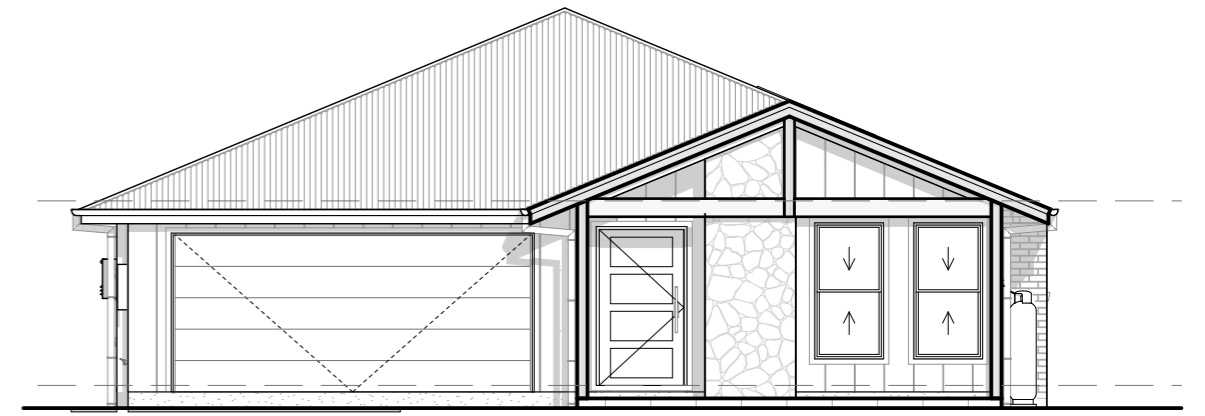
Address:  
130 West High Street  
Coffs Harbour NSW 2450

Hibbards P/L ABN 22 057 895 020  
E:coffs@hibbards.com.au  
P:(02) 6650 3300  
F:(02) 6651 7044  
W: www.hibbards.net.au

drawing title		NOVA 229 RHG ELECTRICAL LAYOUT	
JOB No.	0000	revision	A
SCALE	1:100 <small>printed to A3 size</small>	PAGE	S02
DRAWN	RG	DATE	24/2/2026
WIND	'N2'	SITE	



NOVA 229 LHG FLOOR PLAN SCALE 1:100



NOVA 229 F-FARM W02 LHG SCALE 1:100

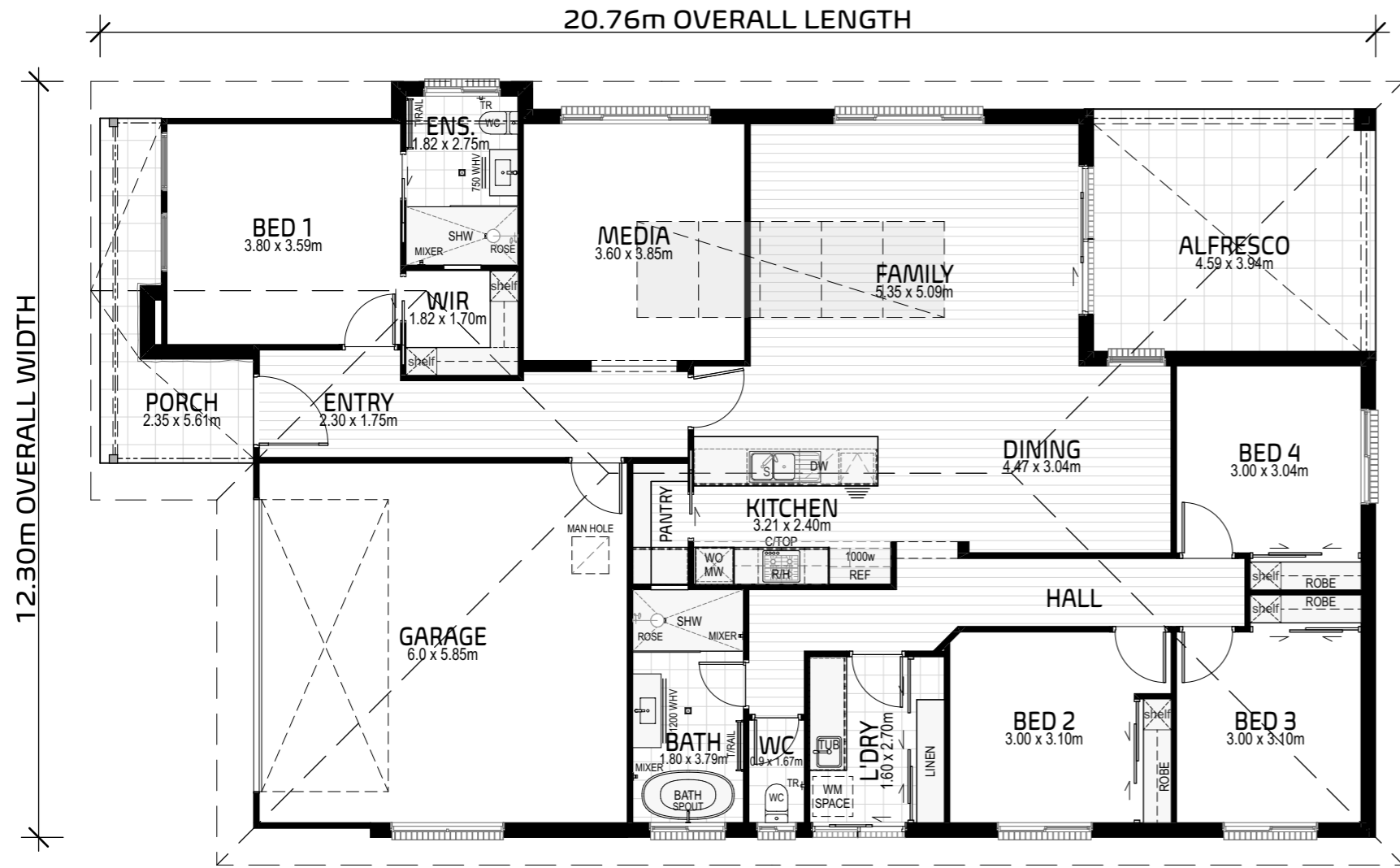
AREAS	
PORCH	7.73
LIVING	168.27
GARAGE	36.74
ALFRESCO	18.08
<b>TOTAL</b>	<b>230.82 m<sup>2</sup></b>
PERIMETER	64.82 Lm

drawing title		NOVA 229 FARM LHG SALES PLAN	
JOB No.	0000	revision	A
SCALE	1:100 <small>printed to A3 size</small>		
DRAWN	RG	PAGE	S03
DATE	24/2/2026		
WIND	'N2'	SITE	

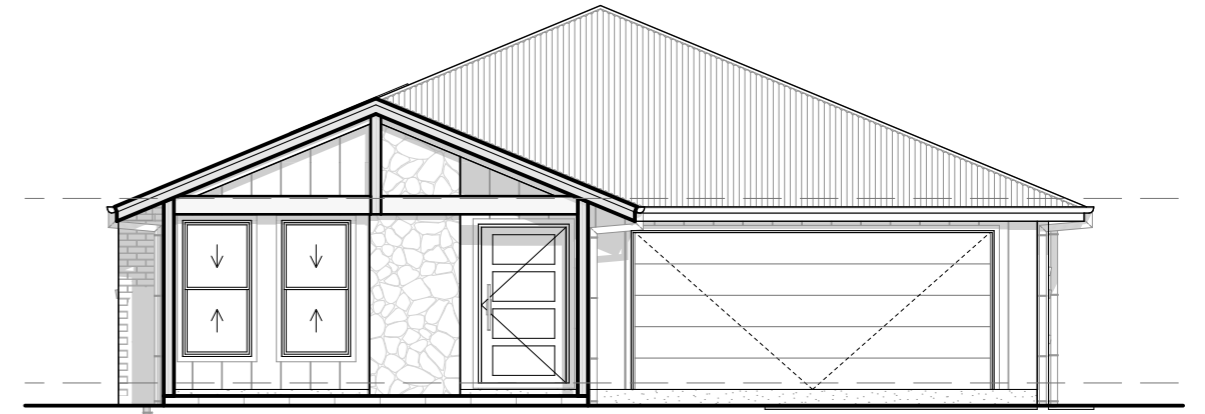
**HibbardHomes** ~ est 1968  
 FIRST NEXT INVEST

Address:  
 130 West High Street  
 Coffs Harbour NSW 2450

Hibbards P/L ABN 22 057 895 020  
 E: coffs@hibbards.com.au  
 P: (02) 6650 3300  
 F: (02) 6651 7044  
 W: www.hibbards.net.au



NOVA 229 RHG FLOOR PLAN  
SCALE 1:100



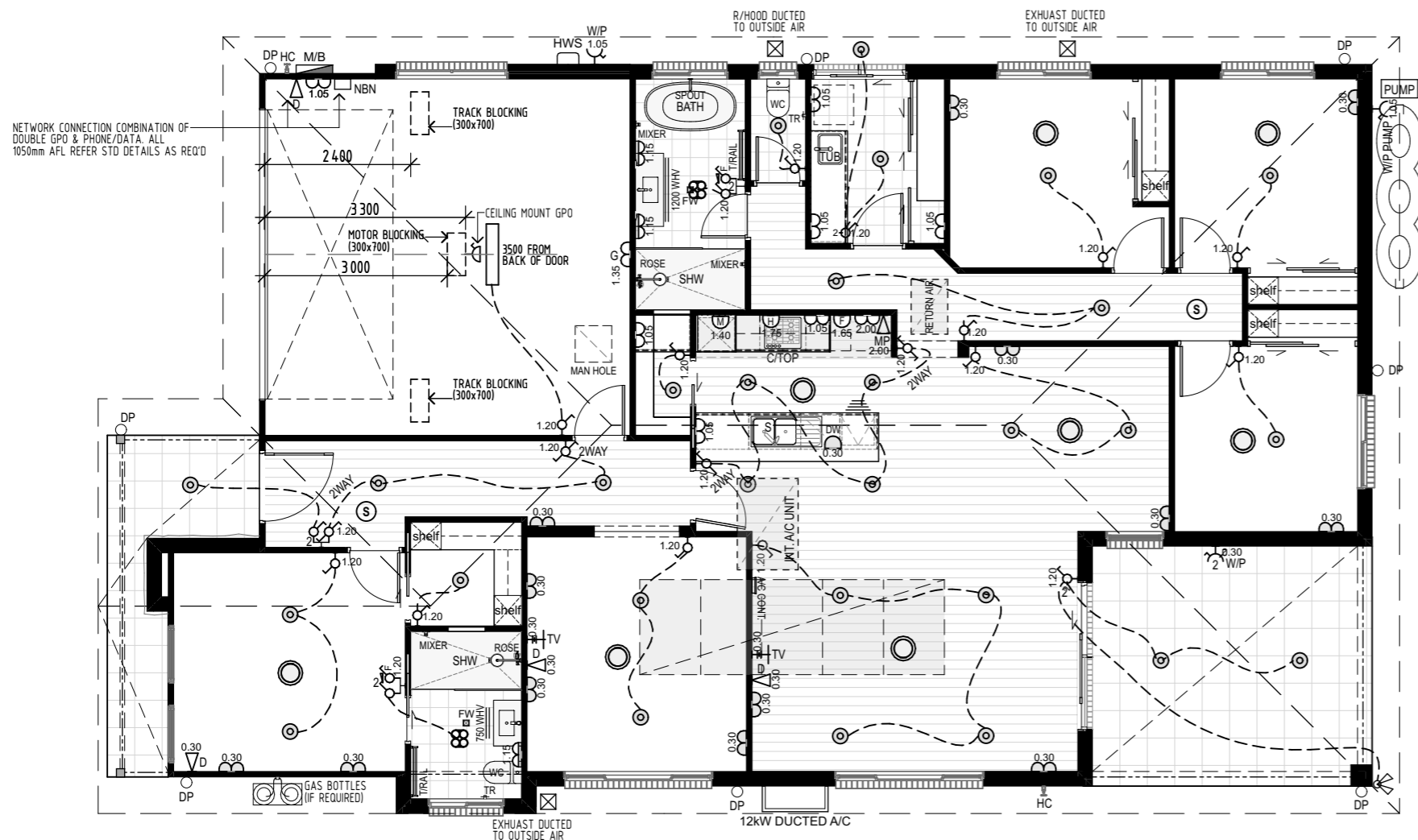
NOVA 229 F-FARM WO2 RHG  
SCALE 1:100

AREAS	
PORCH	7.73
LIVING	168.27
GARAGE	36.74
ALFRESCO	18.08
<b>TOTAL</b>	<b>230.82 m<sup>2</sup></b>
PERIMETER	64.82 Lm



Address:  
130 West High Street  
Coffs Harbour NSW 2450  
Hibbards P/L ABN 22 057 895 020  
E: coffs@hibbards.com.au  
P: (02) 6650 3300  
F: (02) 6651 7044  
W: www.hibbards.net.au

drawing title			
NOVA 229 F-FARM RHG SALES PLAN			
JOB No.	0000	revision	A
SCALE	1:100 <small>printed to A3 size</small>	PAGE	S03
DRAWN	RG	DATE	24/2/2026
WIND	'N2'	SITE	



**NOVA 229 F-FARM ELECTRICAL LAYOUT**  
SCALE 1:100

**NOTE :** PLEASE NOTIFY THE DRAFTING DEPARTMENT AT HIBBARDS HEAD OFFICE FOR ANY DISCREPANCIES IN DETAILS & DIMENSIONS

THIS IS A GENERIC ELECTRICAL PLAN ONLY. THE LAYOUT, LOCATION OF POINTS, LIGHTS AND OUTLETS SHOWN MAY ALTER WITHOUT NOTIFICATION, DUE TO COUNCIL REQUIREMENTS, BUILDING LOCATION AND/OR OTHER UNFORSEEN CIRCUMSTANCES

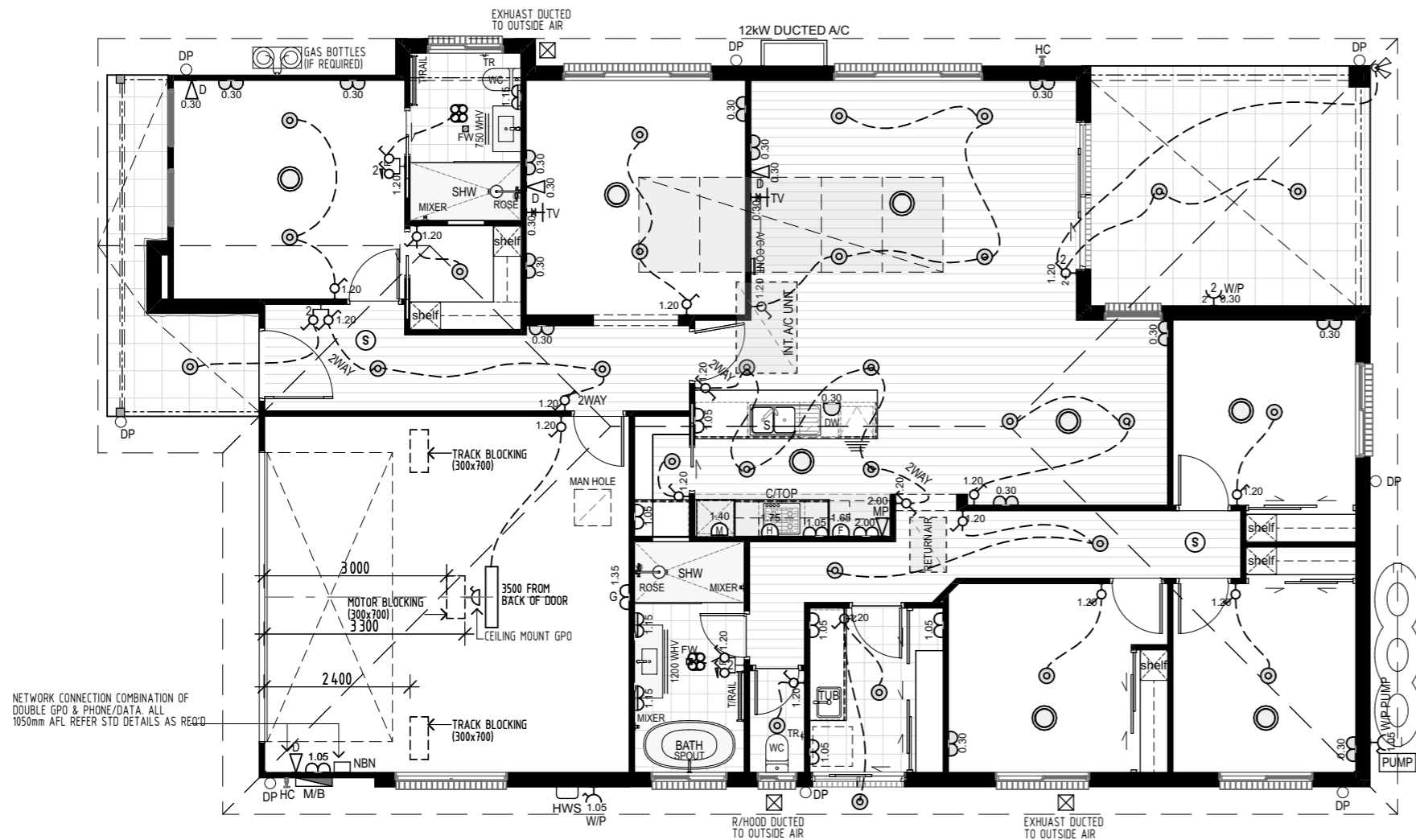
**ALL PRODUCTS AND FINISHES AS PER BUILDERS SPECIFICATIONS**

**NOTE :** ALL EXTERNAL LIGHTS WILL BE SHIELDED TO PREVENT LIGHT ABOVE HORIZONTAL

HOME OFFICE HO-ELECTRICAL/LIGHTING SCHEDULE		
SYMBOL	DESCRIPTION	QUANTITY
	3 HEATLAMP/LIGHT & EXHAUST FAN	2
	A/C CONT.	1
	A/C DIFFUSER	8
	DATA AT 300mm AFL	3
	DATA AT 1050mm AFL	1
	DOUBLE GPO AT 300mm AFL	13
	DOUBLE GPO AT 1050mm AFL	7
	DOUBLE GPO AT 2000mm AFL	1
	DOUBLE GPO-GARAGE AT 1350mm AFL	1
	DOUBLE GPO-VANITY AT 1150mm AFL	3
	DOUBLE SPOTLIGHT	1
	DOUBLE WATERPROOF GPO AT 300mm AFL	1
	DOWNLIGHT	29
	DUCTED GRILL	3
	FLURO LIGHT	1
	MODEM POINT AT 2000mm AFL	1
	SINGLE GPO-CEILING MOUNT	1
	SINGLE GPO-DISHWASHER AT 300mm AFL	1
	SINGLE GPO-FRIDGE AT 1650mm AFL	1
	SINGLE GPO-MICROWAVE AT 1400mm AFL	1
	SINGLE GPO-R/HOOD AT 1750mm AFL	1
	SINGLE WATERPROOF GPO AT 1050mm AFL	4
	SMOKE ALARM	2
	SWITCH - DOUBLE	2
	SWITCH - DOUBLE (INC 2WAY)	1
	SWITCH - DOUBLE (INC EXHAUST FAN)	2
	SWITCH - SINGLE	12
	SWITCH - SINGLE (2WAY)	3
	TV AT 300mm AFL	2

**HibbardHomes** est 1968  
 FIRST NEXT INVEST  
 Address: 130 West High Street, Coffs Harbour NSW 2450  
 Hibbards P/L ABN 22 057 895 020  
 E: coffs@hibbards.com.au  
 P: (02) 6650 3300  
 F: (02) 6651 7044  
 W: www.hibbards.net.au

drawing title		NOVA 229 FARM LHG ELECTRICAL LAYOUT	
JOB No.	0000	revision	A
SCALE	1:100 <small>printed to A3 size</small>	PAGE	S04
DRAWN	RG	DATE	24/2/2026
WIND	'N2'	SITE	



**NOVA 229 F-FARM ELECTRICAL LAYOUT**  
SCALE 1:100

**NOTE :** PLEASE NOTIFY THE DRAFTING DEPARTMENT AT HIBBARDS HEAD OFFICE FOR ANY DISCREPANCIES IN DETAILS & DIMENSIONS

THIS IS A GENERIC ELECTRICAL PLAN ONLY. THE LAYOUT, LOCATION OF POINTS, LIGHTS AND OUTLETS SHOWN MAY ALTER WITHOUT NOTIFICATION, DUE TO COUNCIL REQUIREMENTS, BUILDING LOCATION AND/OR OTHER UNFORSEEN CIRCUMSTANCES

**ALL PRODUCTS AND FINISHES AS PER BUILDERS SPECIFICATIONS**

**NOTE :** ALL EXTERNAL LIGHTS WILL BE SHIELDED TO PREVENT LIGHT ABOVE HORIZONTAL

ELECTRICAL/LIGHTING SCHEDULE		
SYMBOL	DESCRIPTION	QUANTITY
⊗	3 HEATLAMP/LIGHT & EXHAUST FAN	2
INCO 3W	A/C CONT.	1
⊙	A/C DIFFUSER	8
⏚ <sub>0.30</sub>	DATA AT 300mm AFL	3
⏚ <sub>1.05</sub>	DATA AT 1050mm AFL	1
⊗ <sub>0.30</sub>	DOUBLE GPO AT 300mm AFL	13
⊗ <sub>1.05</sub>	DOUBLE GPO AT 1050mm AFL	7
⊗ <sub>2.00</sub>	DOUBLE GPO AT 2000mm AFL	1
⊗ <sub>G-1.35</sub>	DOUBLE GPO-GARAGE AT 1350mm AFL	1
⊗ <sub>1.15</sub>	DOUBLE GPO-VANITY AT 1150mm AFL	3
⊗	DOUBLE SPOTLIGHT	1
⊗ <sub>WP 2x0.30</sub>	DOUBLE WATERPROOF GPO AT 300mm AFL	1
⊙	DOWNLIGHT	29
⊗	DUCTED GRILL	3
⎓	FLURO LIGHT	1
⊗ <sub>2.00</sub>	MODEM POINT AT 2000mm AFL	1
IN CEILING	SINGLE GPO-CEILING MOUNT	1
DW <sub>0.30</sub>	SINGLE GPO-DISHWASHER AT 300mm AFL	1
⊗ <sub>1.65</sub>	SINGLE GPO-FRIDGE AT 1650mm AFL	1
⊗ <sub>1.40</sub>	SINGLE GPO-MICROWAVE AT 1400mm AFL	1
⊗ <sub>1.75</sub>	SINGLE GPO-R/HOOD AT 1750mm AFL	1
⊗ <sub>WP 1.05</sub>	SINGLE WATERPROOF GPO AT 1050mm AFL	2
⊗	SMOKE ALARM	2
⊗ <sub>1.20</sub>	SWITCH - DOUBLE	2
⊗ <sub>2WAY 1.20</sub>	SWITCH - DOUBLE (INC 2WAY)	1
⊗ <sub>1.20</sub>	SWITCH - DOUBLE (INC EXHAUST FAN)	2
⊗ <sub>1.20</sub>	SWITCH - SINGLE	12
⊗ <sub>2WAY 1.20</sub>	SWITCH - SINGLE (2WAY)	3
⊗ <sub>TV 0.30</sub>	TV AT 300mm AFL	2

**HibbardHomes** ~ est 1968  
FIRST NEXT INVEST

Address:  
130 West High Street  
Coffs Harbour NSW 2450

Hibbards P/L ABN 22 057 895 020  
E:coffs@hibbards.com.au  
P:(02) 6650 3300  
F:(02) 6651 7044  
W: www.hibbards.net.au

drawing title		NOVA 229 F-FARM RHG ELECTRICAL LAYOUT	
JOB No.	0000	revision	A
SCALE	1:100 <small>printed to A3 size</small>	PAGE	S04
DRAWN	RG	DATE	24/2/2026
WIND	'N2'	SITE	