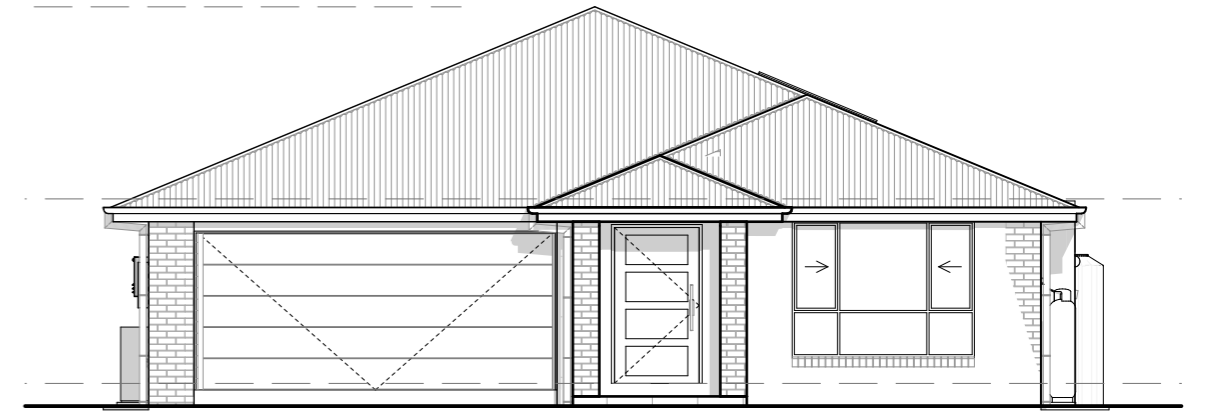


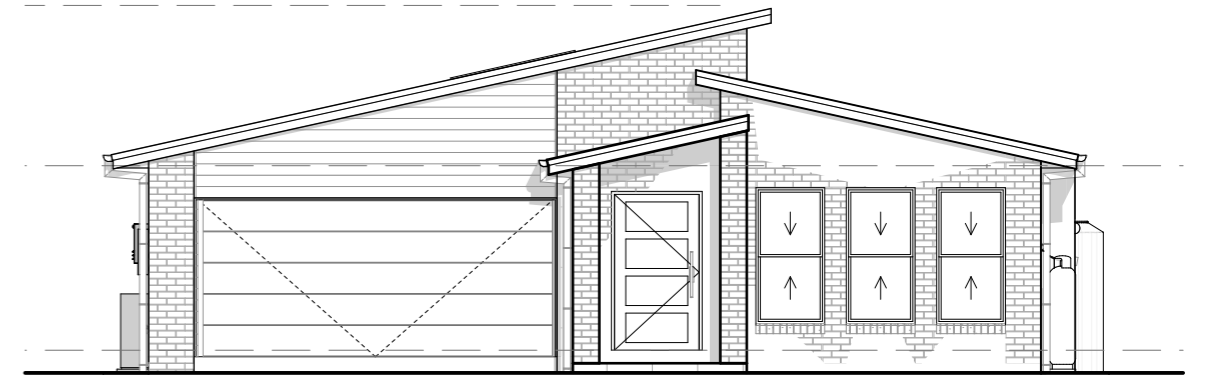
KIATO 236 LHG FLOOR PLAN  
SCALE 1:100



KIATO 236 P W01 LHG  
SCALE 1:100

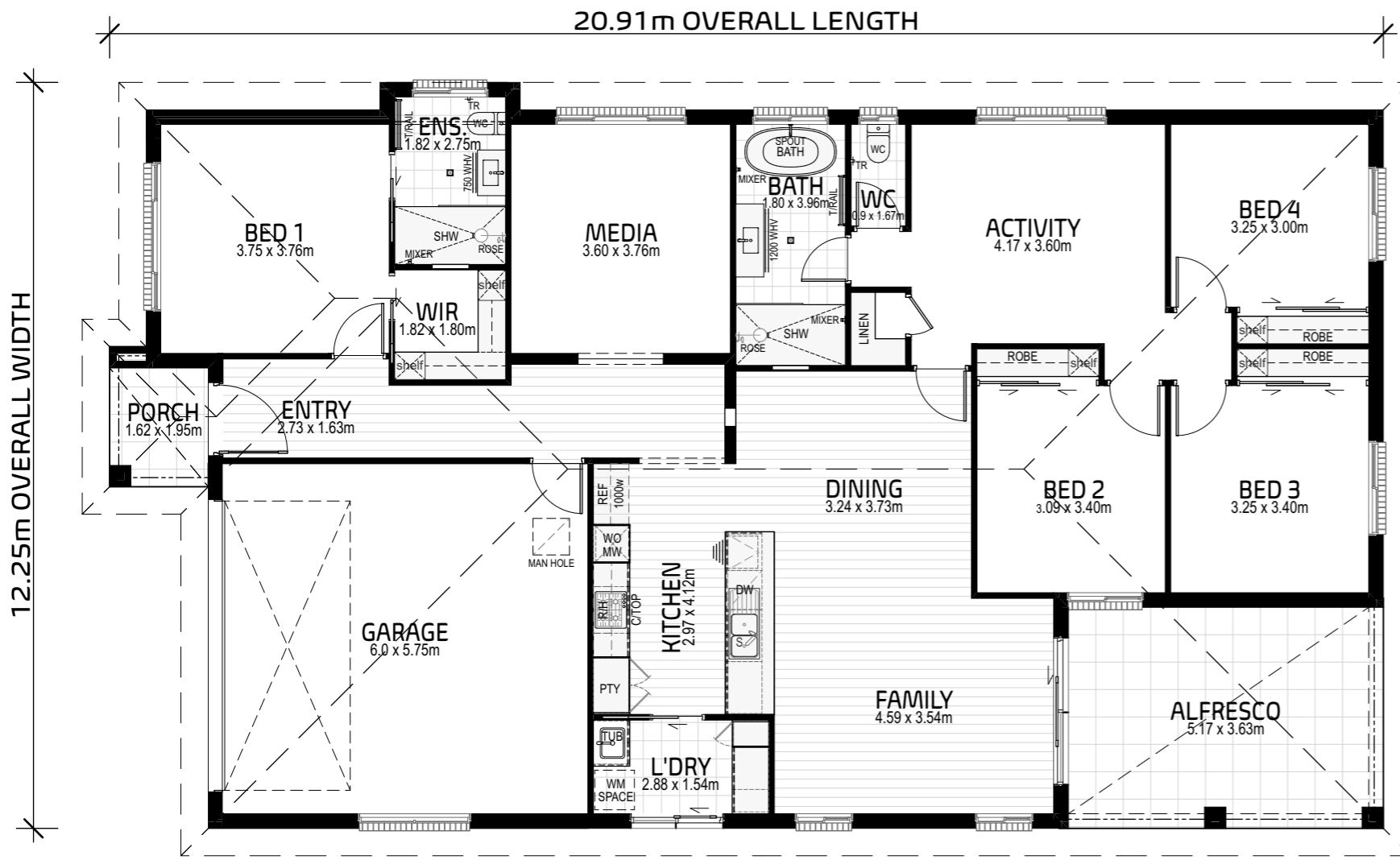


KIATO 236 RP W02 LHG  
SCALE 1:100



KIATO 236 S W03 LHG  
SCALE 1:100

AREAS	
PORCH	3.37
LIVING	176.90
GARAGE	37.32
ALFRESCO	18.77
<b>TOTAL</b>	<b>236.36 m<sup>2</sup></b>
PERIMETER	65.12 Lm



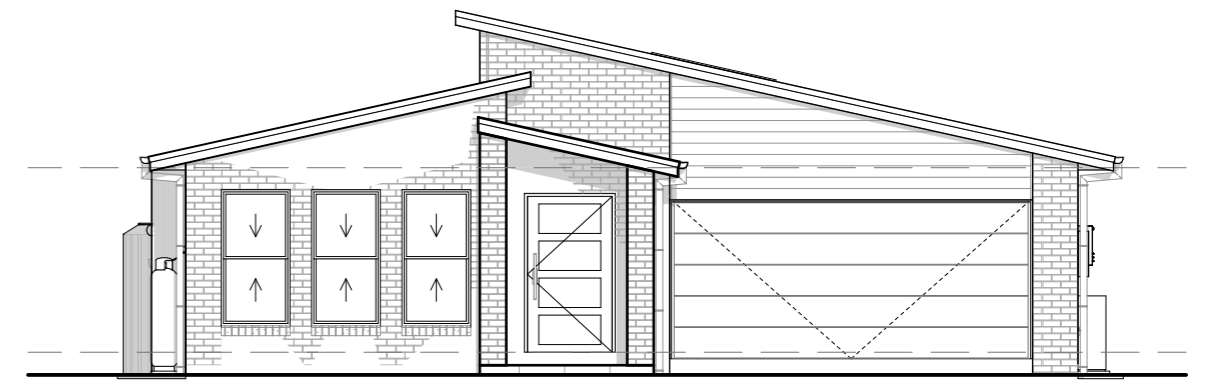
KIATO 236 RHG FLOOR PLAN  
SCALE 1:100



KIATO 236 P W01 RHG  
SCALE 1:100



KIATO 236 RP W02 RHG  
SCALE 1:100



KIATO 236 S W03 RHG  
SCALE 1:100

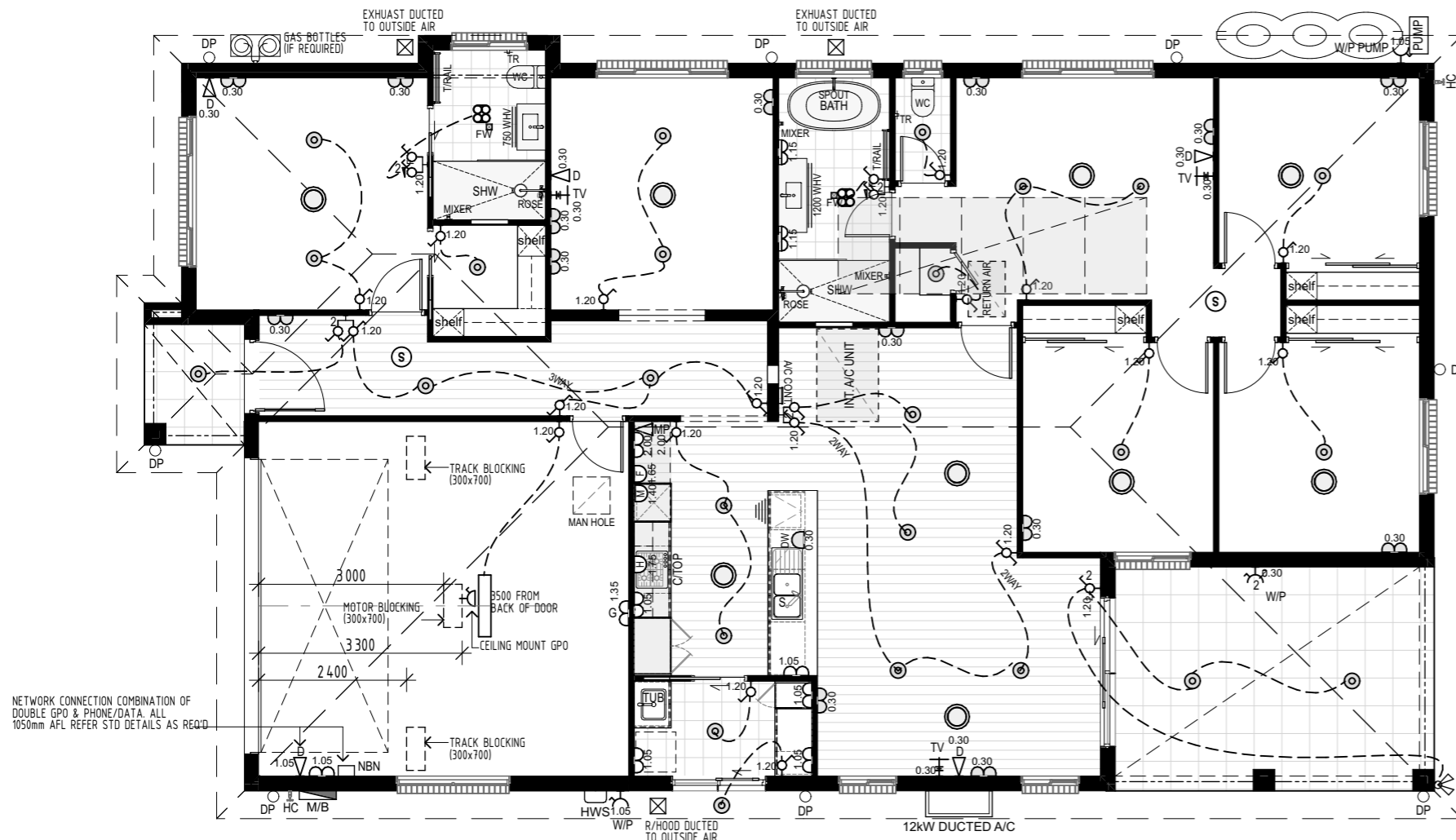
AREAS	
PORCH	3.37
LIVING	176.90
GARAGE	37.32
ALFRESCO	18.77
<b>TOTAL</b>	<b>236.36 m<sup>2</sup></b>
PERIMETER	65.12 Lm



Address:  
130 West High Street  
Coffs Harbour NSW 2450  
Hibbards P/L ABN 22 057 895 020  
E: coffs@hibbards.com.au  
P: (02) 6650 3300  
F: (02) 6651 7044  
W: www.hibbards.net.au

drawing title		KIATO 236 RHG SALES PLAN	
JOB No.	0000	revision	A
SCALE	1:100 <small>printed to A3 size</small>	PAGE	S01
DRAWN	RG	DATE	24/2/2026
WIND	'N2'	SITE	





**KIATO 236 RHG ELECTRICAL LAYOUT**  
SCALE 1:100

**NOTE :** PLEASE NOTIFY THE DRAFTING DEPARTMENT AT HIBBARD'S HEAD OFFICE FOR ANY DISCREPANCIES IN DETAILS & DIMENSIONS

THIS IS A GENERIC ELECTRICAL PLAN ONLY. THE LAYOUT, LOCATION OF POINTS, LIGHTS AND OUTLETS SHOWN MAY ALTER WITHOUT NOTIFICATION, DUE TO COUNCIL REQUIREMENTS, BUILDING LOCATION AND/OR OTHER UNFORSEEN CIRCUMSTANCES

**ALL PRODUCTS AND FINISHES AS PER BUILDERS SPECIFICATIONS**

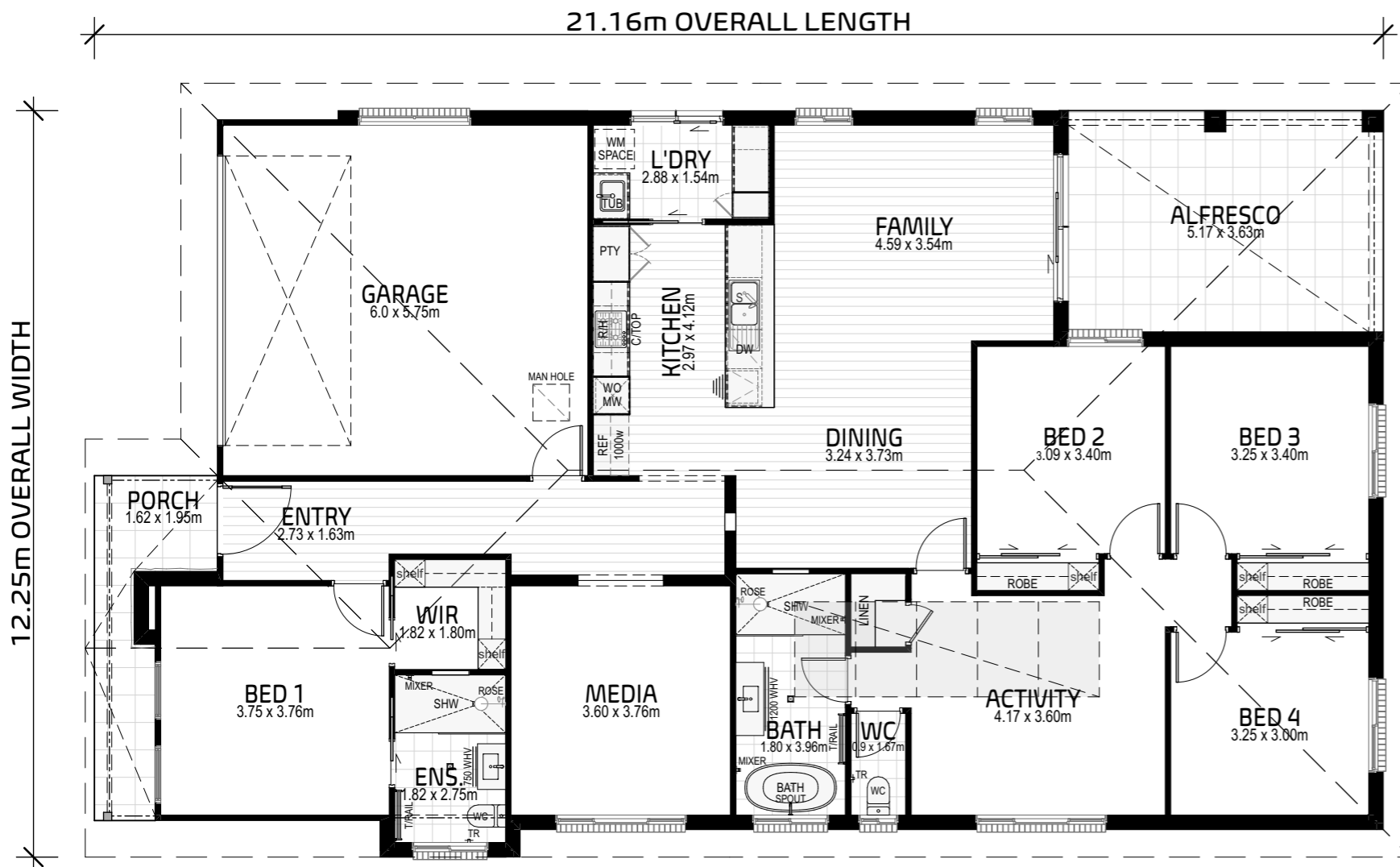
**NOTE :** ALL EXTERNAL LIGHTS WILL BE SHIELDED TO PREVENT LIGHT ABOVE HORIZONTAL

HOME OFFICE HO-ELECTRICAL/LIGHTING SCHEDULE		
SYMBOL	DESCRIPTION	QUANTITY
⊗	3 HEATLAMP/LIGHT & EXHAUST FAN	2
INCO 3W	A/C CONT.	1
⊙	A/C DIFFUSER	9
0.30 ∇ <sub>D</sub>	DATA AT 300mm AFL	4
1.05 ∇	DATA AT 1050mm AFL	1
0.30	DOUBLE GPO AT 300mm AFL	14
1.05	DOUBLE GPO AT 1050mm AFL	6
2.00	DOUBLE GPO AT 2000mm AFL	1
1.35	DOUBLE GPO-GARAGE AT 1350mm AFL	1
1.15	DOUBLE GPO-VANITY AT 1150mm AFL	2
⊗	DOUBLE SPOTLIGHT	1
W/P 0.30	DOUBLE WATERPROOF GPO AT 300mm AFL	1
⊙	DOWNLIGHT	25
⊗	DUCTED GRILL	3
▭	FLURO LIGHT	1
2.00 ∇	MODEM POINT AT 2000mm AFL	1
⊗	SINGLE GPO-CEILING MOUNT	1
DW 0.30	SINGLE GPO-DISHWASHER AT 300mm AFL	1
1.65	SINGLE GPO-FRIDGE AT 1650mm AFL	1
1.40	SINGLE GPO-MICROWAVE AT 1400mm AFL	1
1.75	SINGLE GPO-R/HOOD AT 1750mm AFL	1
1.05	SINGLE WATERPROOF GPO AT 1050mm AFL	2
⊙	SMOKE ALARM	2
1.20 ♂	SWITCH - DOUBLE	1
♂ 1.20	SWITCH - DOUBLE (INC 2WAY)	1
♂ 1.20	SWITCH - DOUBLE (INC 3WAY)	1
♂ 1.20	SWITCH - DOUBLE (INC EXHAUST FAN)	2
♂ 2.00	SWITCH - SINGLE	13
♂ 1.20	SWITCH - SINGLE (2WAY)	1
♂ 1.20	SWITCH - SINGLE (3WAY)	2
♂ 0.30	TV AT 300mm AFL	3

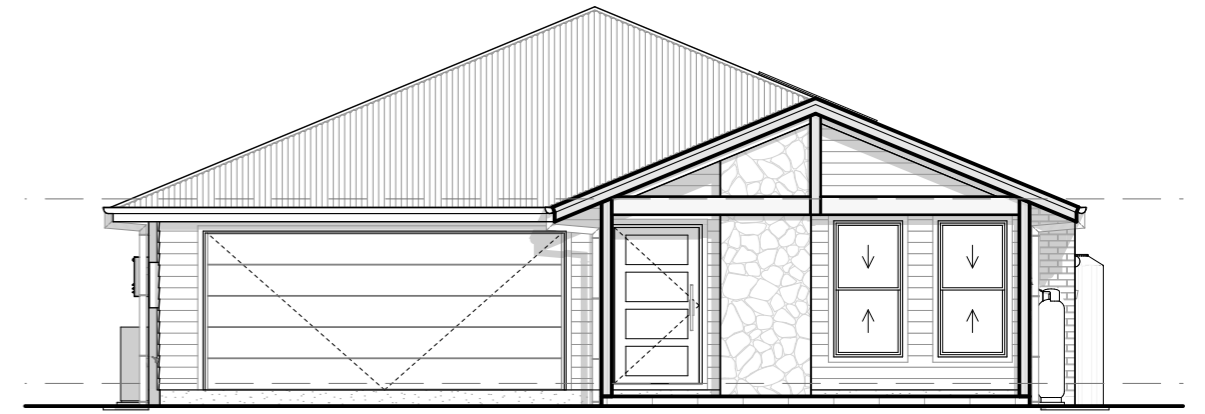
drawing title		KIATO 236 RHG ELECTRICAL LAYOUT	
JOB No.	0000	revision	A
SCALE	1:100 <small>printed to A3 size</small>	PAGE	S02
DRAWN	RG	DATE	24/2/2026
WIND	'N2'	SITE	

**HibbardHomes** est 1968  
FIRST NEXT INVEST

Address:  
130 West High Street  
Coffs Harbour NSW 2450  
Hibbards P/L ABN 22 057 895 020  
E:coffs@hibbards.com.au  
P:(02) 6650 3300  
F:(02) 6651 7044  
W: www.hibbards.net.au



KIATO 236 LHG FLOOR PLAN  
SCALE 1:100

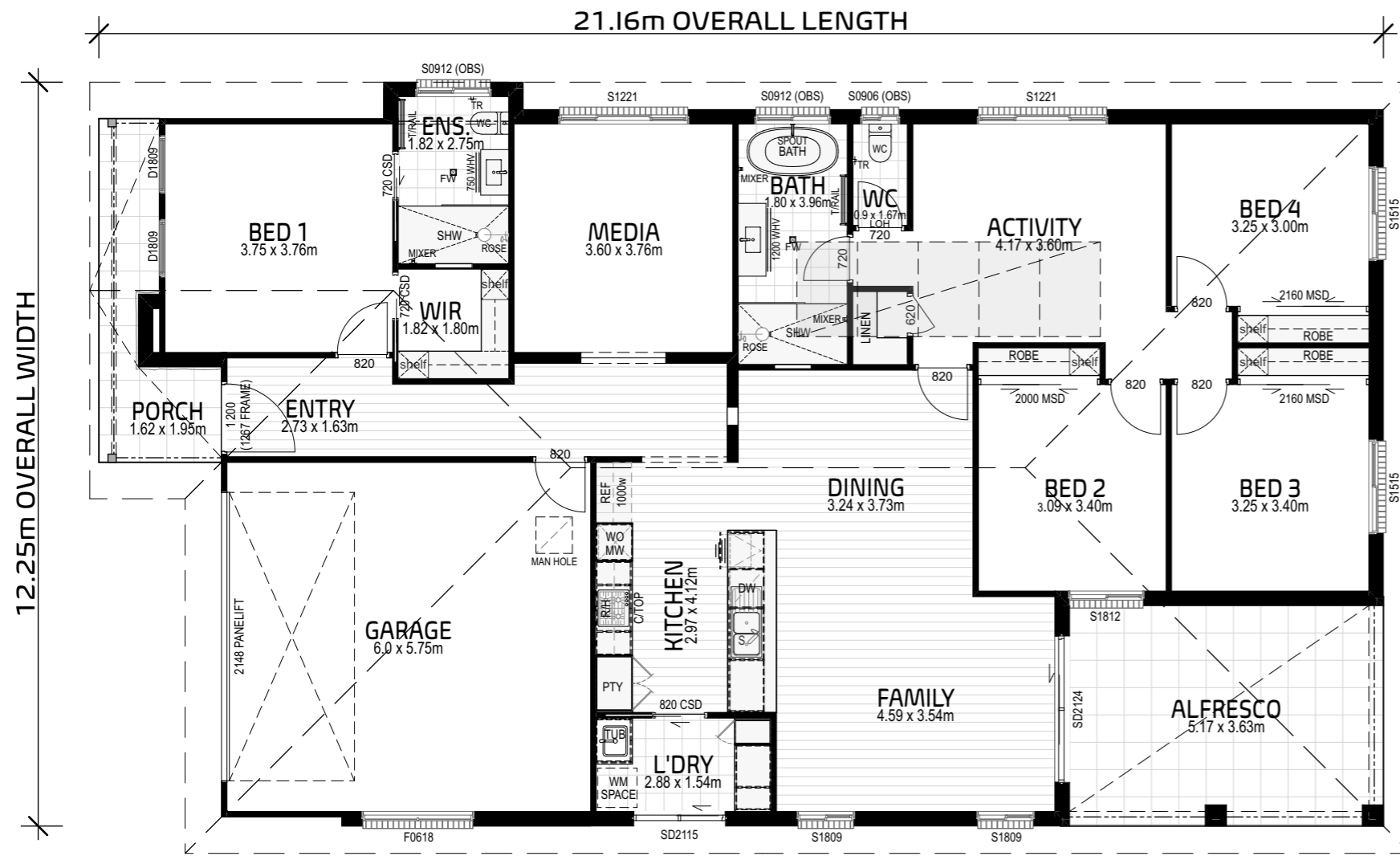


KIATO 236 COASTAL W02 LHG  
SCALE 1:100

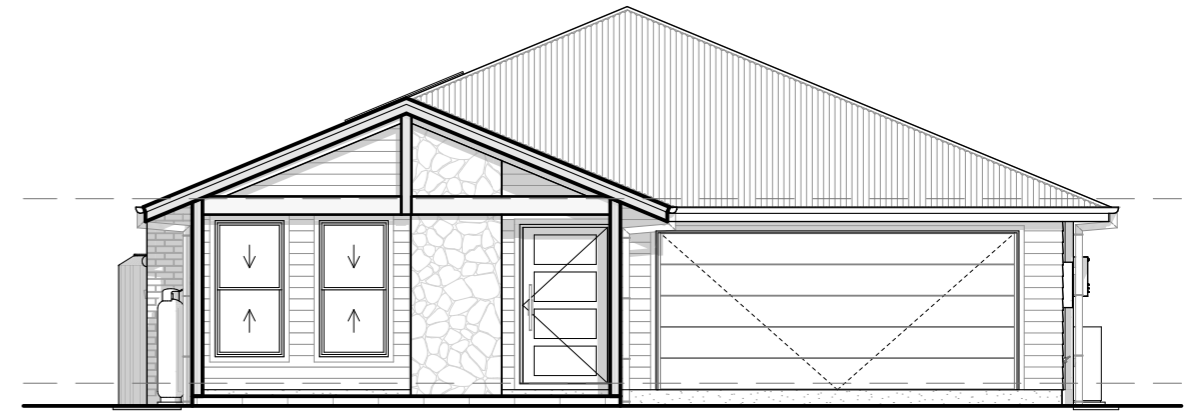
AREAS	
PORCH	6.84
LIVING	175.89
GARAGE	36.12
ALFRESCO	18.77
<b>TOTAL</b>	<b>237.62 m<sup>2</sup></b>
PERIMETER	65.52 Lm

**HibbardHomes** ~ est 1968  
 FIRST NEXT INVEST  
 Address: 130 West High Street, Coffs Harbour NSW 2450  
 Hibbards P/L ABN 22 057 895 020  
 E: coffs@hibbards.com.au  
 P: (02) 6650 3300  
 F: (02) 6651 7044  
 W: www.hibbards.net.au

drawing title		KIATO 236 COASTAL LHG SALES PLAN	
JOB No.	0000	revision	A
SCALE	1:100 <small>printed to A3 size</small>	PAGE	S03
DRAWN	RG	DATE	24/2/2026
WIND	'N2'	SITE	



KIATO 236 RHG FLOOR PLAN  
SCALE 1:100



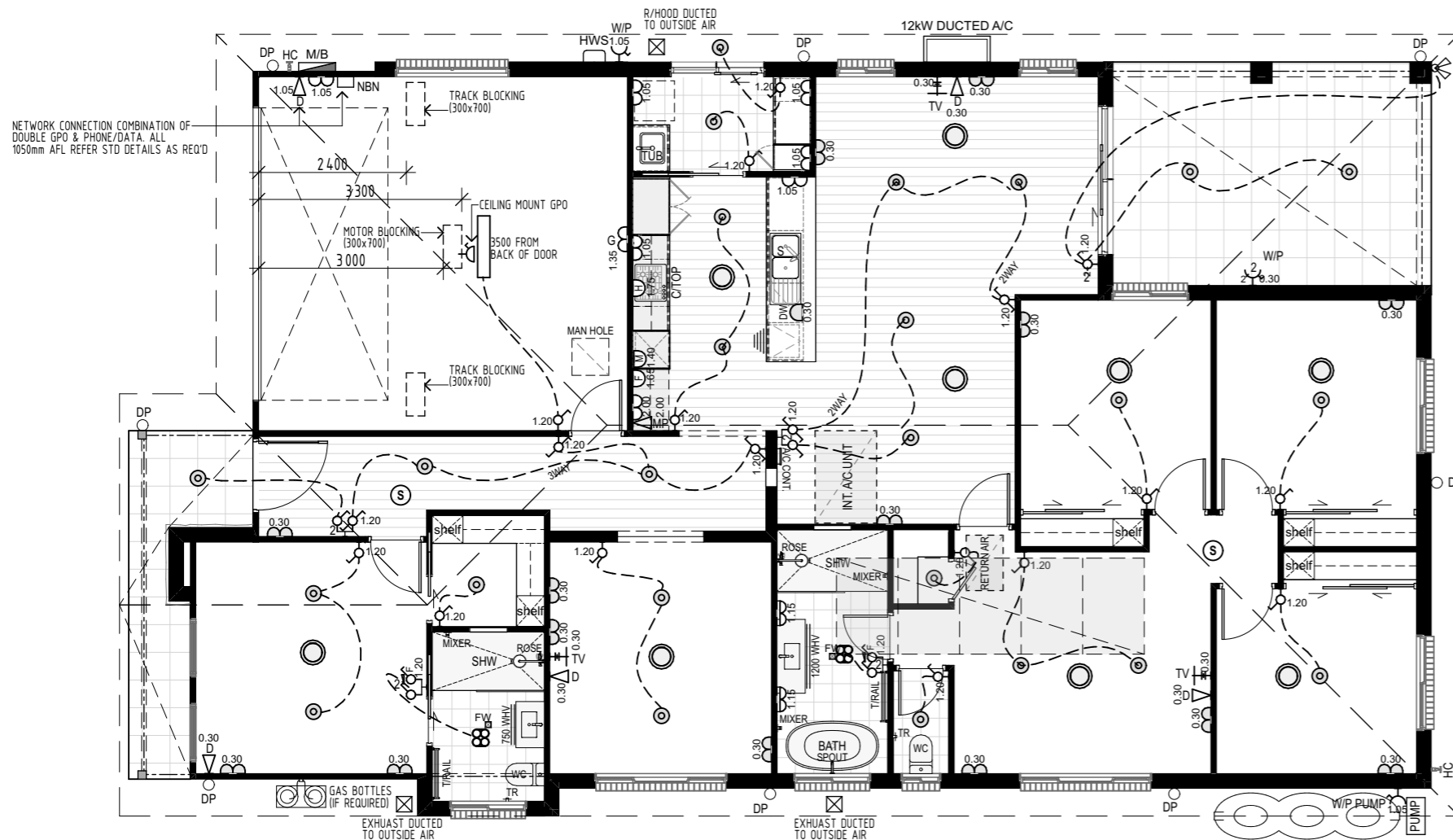
KIATO 236 COASTAL WO2 RHG  
SCALE 1:100

AREAS	
PORCH	6.84
LIVING	175.89
GARAGE	36.12
ALFRESCO	18.77
<b>TOTAL</b>	<b>237.62 m<sup>2</sup></b>
PERIMETER	65.52 Lm



Address:  
130 West High Street  
Coffs Harbour NSW 2450  
Hibbards P/L ABN 22 057 895 020  
E: coffs@hibbards.com.au  
P: (02) 6650 3300  
F: (02) 6651 7044  
W: www.hibbards.net.au

drawing title	KIATO 236 COASTAL RHG SALES PLAN		
JOB No.	0000	revision	A
SCALE	1:100 <small>printed to A3 size</small>	PAGE	S03
DRAWN	RG	DATE	24/2/2026
WIND	'N2'	SITE	



**KIATO 236 COASTAL ELECTRICAL LAYOUT**  
SCALE 1:100

**NOTE :** PLEASE NOTIFY THE DRAFTING DEPARTMENT AT HIBBARDS HEAD OFFICE FOR ANY DISCREPANCIES IN DETAILS & DIMENSIONS

THIS IS A GENERIC ELECTRICAL PLAN ONLY. THE LAYOUT, LOCATION OF POINTS, LIGHTS AND OUTLETS SHOWN MAY ALTER WITHOUT NOTIFICATION, DUE TO COUNCIL REQUIREMENTS, BUILDING LOCATION AND/OR OTHER UNFORSEEN CIRCUMSTANCES

**ALL PRODUCTS AND FINISHES AS PER BUILDERS SPECIFICATIONS**

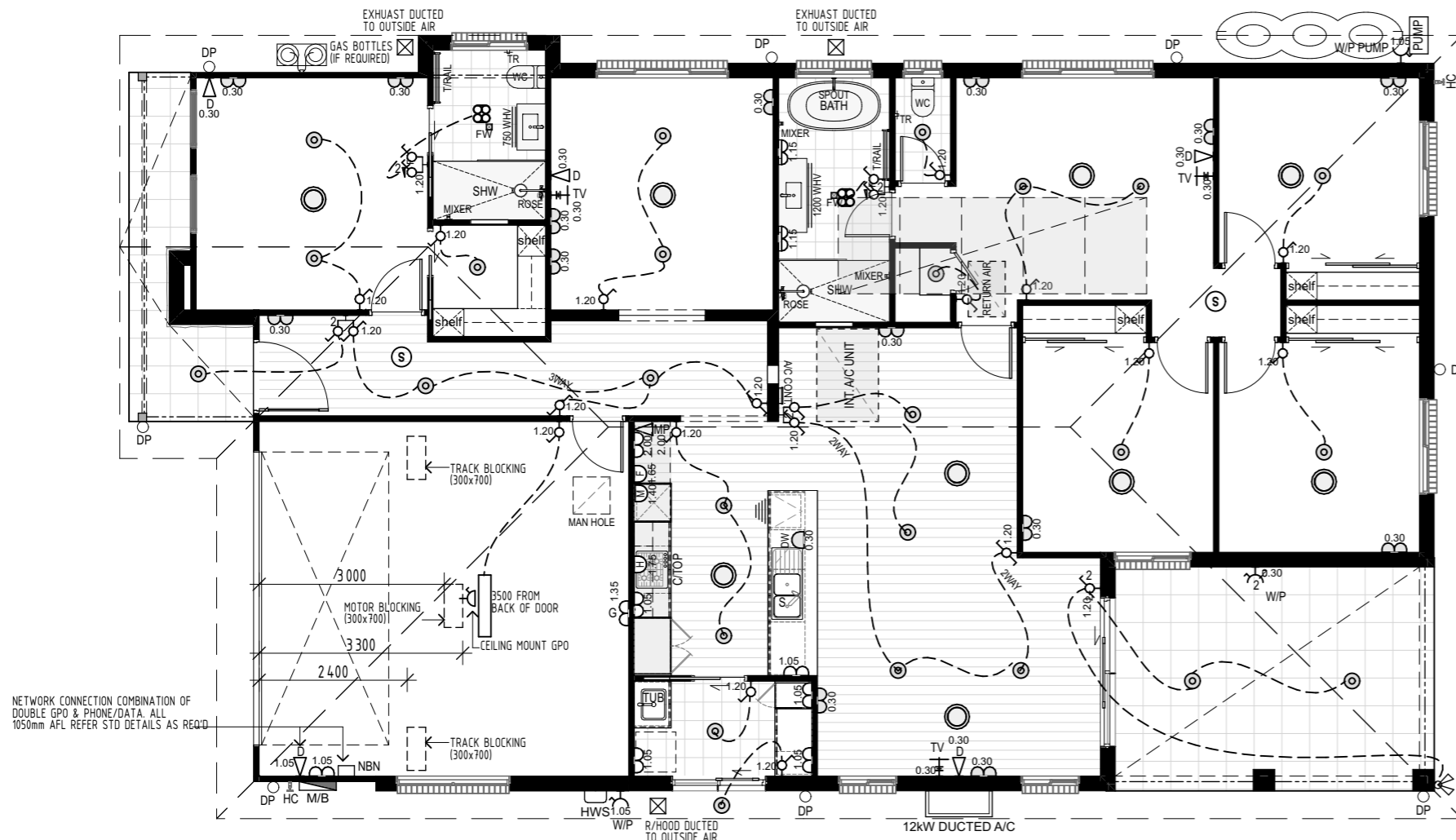
**NOTE :** ALL EXTERNAL LIGHTS WILL BE SHIELDED TO PREVENT LIGHT ABOVE HORIZONTAL

HOME OFFICE HO-ELECTRICAL/LIGHTING SCHEDULE		
SYMBOL	DESCRIPTION	QUANTITY
	3 HEATLAMP/LIGHT & EXHAUST FAN	2
	A/C CONT.	1
	A/C DIFFUSER	9
	DATA AT 300mm AFL	4
	DATA AT 1050mm AFL	1
	DOUBLE GPO AT 300mm AFL	14
	DOUBLE GPO AT 1050mm AFL	6
	DOUBLE GPO AT 2000mm AFL	1
	DOUBLE GPO-GARAGE AT 1350mm AFL	1
	DOUBLE GPO-VANITY AT 1150mm AFL	2
	DOUBLE SPOTLIGHT	1
	DOUBLE WATERPROOF GPO AT 300mm AFL	1
	DOWNLIGHT	25
	DUCTED GRILL	3
	FLURO LIGHT	1
	MODEM POINT AT 2000mm AFL	1
	SINGLE GPO-CEILING MOUNT	1
	SINGLE GPO-DISHWASHER AT 300mm AFL	1
	SINGLE GPO-FRIDGE AT 1650mm AFL	1
	SINGLE GPO-MICROWAVE AT 1400mm AFL	1
	SINGLE GPO-R/HOOD AT 1750mm AFL	1
	SINGLE WATERPROOF GPO AT 1050mm AFL	2
	SMOKE ALARM	2
	SWITCH - DOUBLE	1
	SWITCH - DOUBLE (INC 2WAY)	1
	SWITCH - DOUBLE (INC 3WAY)	1
	SWITCH - DOUBLE (INC EXHAUST FAN)	2
	SWITCH - SINGLE	13
	SWITCH - SINGLE (2WAY)	1
	SWITCH - SINGLE (3WAY)	2
	TV AT 300mm AFL	3

drawing title		KIATO 236 COASTAL LHG ELECTRICAL LAYOUT		
JOB No.	0000	revision	A	
SCALE	1:100 <small>printed to A3 size</small>	PAGE	S04	
DRAWN	RG	DATE	24/2/2026	
WIND	'N2'	SITE		

**HibbardHomes** est 1968  
FIRST NEXT INVEST

Address:  
130 West High Street  
Coffs Harbour NSW 2450  
Hibbards P/L ABN 22 057 895 020  
E:coffs@hibbards.com.au  
P:(02) 6650 3300  
F:(02) 6651 7044  
W: www.hibbards.net.au



**KIATO 236 COASTAL RHG ELECTRICAL LAYOUT**

SCALE 1:100

**NOTE :** PLEASE NOTIFY THE DRAFTING DEPARTMENT AT HIBBARDS HEAD OFFICE FOR ANY DISCREPANCIES IN DETAILS & DIMENSIONS

THIS IS A GENERIC ELECTRICAL PLAN ONLY. THE LAYOUT, LOCATION OF POINTS, LIGHTS AND OUTLETS SHOWN MAY ALTER WITHOUT NOTIFICATION, DUE TO COUNCIL REQUIREMENTS, BUILDING LOCATION AND/OR OTHER UNFORSEEN CIRCUMSTANCES

**ALL PRODUCTS AND FINISHES AS PER BUILDERS SPECIFICATIONS**

**NOTE :** ALL EXTERNAL LIGHTS WILL BE SHIELDED TO PREVENT LIGHT ABOVE HORIZONTAL

HOME OFFICE HO-ELECTRICAL/LIGHTING SCHEDULE		
SYMBOL	DESCRIPTION	QUANTITY
⊗	3 HEATLAMP/LIGHT & EXHAUST FAN	2
INCO 3W	A/C CONT.	1
⊙	A/C DIFFUSER	9
0.30▽D	DATA AT 300mm AFL	4
1.05▽	DATA AT 1050mm AFL	1
0.30	DOUBLE GPO AT 300mm AFL	14
1.05	DOUBLE GPO AT 1050mm AFL	6
2.00	DOUBLE GPO AT 2000mm AFL	1
1.35	DOUBLE GPO-GARAGE AT 1350mm AFL	1
1.15	DOUBLE GPO-VANITY AT 1150mm AFL	2
⊕	DOUBLE SPOTLIGHT	1
W/P 0.30	DOUBLE WATERPROOF GPO AT 300mm AFL	1
⊙	DOWNLIGHT	25
⊠	DUCTED GRILL	3
▭	FLURO LIGHT	1
2.00▽	MODEM POINT AT 2000mm AFL	1
⊕	SINGLE GPO-CEILING MOUNT	1
DW 0.30	SINGLE GPO-DISHWASHER AT 300mm AFL	1
1.65	SINGLE GPO-FRIDGE AT 1650mm AFL	1
1.40	SINGLE GPO-MICROWAVE AT 1400mm AFL	1
1.75	SINGLE GPO-R/HOOD AT 1750mm AFL	1
1.05	SINGLE WATERPROOF GPO AT 1050mm AFL	2
⊙	SMOKE ALARM	2
1.20⊕	SWITCH - DOUBLE	1
⊕ 1.20	SWITCH - DOUBLE (INC 2WAY)	1
1.20⊕	SWITCH - DOUBLE (INC 3WAY)	1
1.20⊕	SWITCH - DOUBLE (INC EXHAUST FAN)	2
⊕ 2.00	SWITCH - SINGLE	13
1.20⊕	SWITCH - SINGLE (2WAY)	1
⊕ 1.20	SWITCH - SINGLE (3WAY)	2
0.30	TV AT 300mm AFL	3

**HibbardHomes** est 1968  
 FIRST NEXT INVEST  
 Address: 130 West High Street, Coffs Harbour NSW 2450  
 Hibbards P/L ABN 22 057 895 020  
 E: coffs@hibbards.com.au  
 P: (02) 6650 3300  
 F: (02) 6651 7044  
 W: www.hibbards.net.au

drawing title		KIATO 236 COASTAL RHG ELECTRICAL LAYOUT	
JOB No.	0000	revision	A
SCALE	1:100 <small>printed to A3 size</small>	PAGE	S04
DRAWN	RG	DATE	24/2/2026
WIND	'N2'	SITE	