

ALPHA 225 LHG FLOOR PLAN
SCALE 1:100



ALPHA 225 P W02 LHG
SCALE 1:100



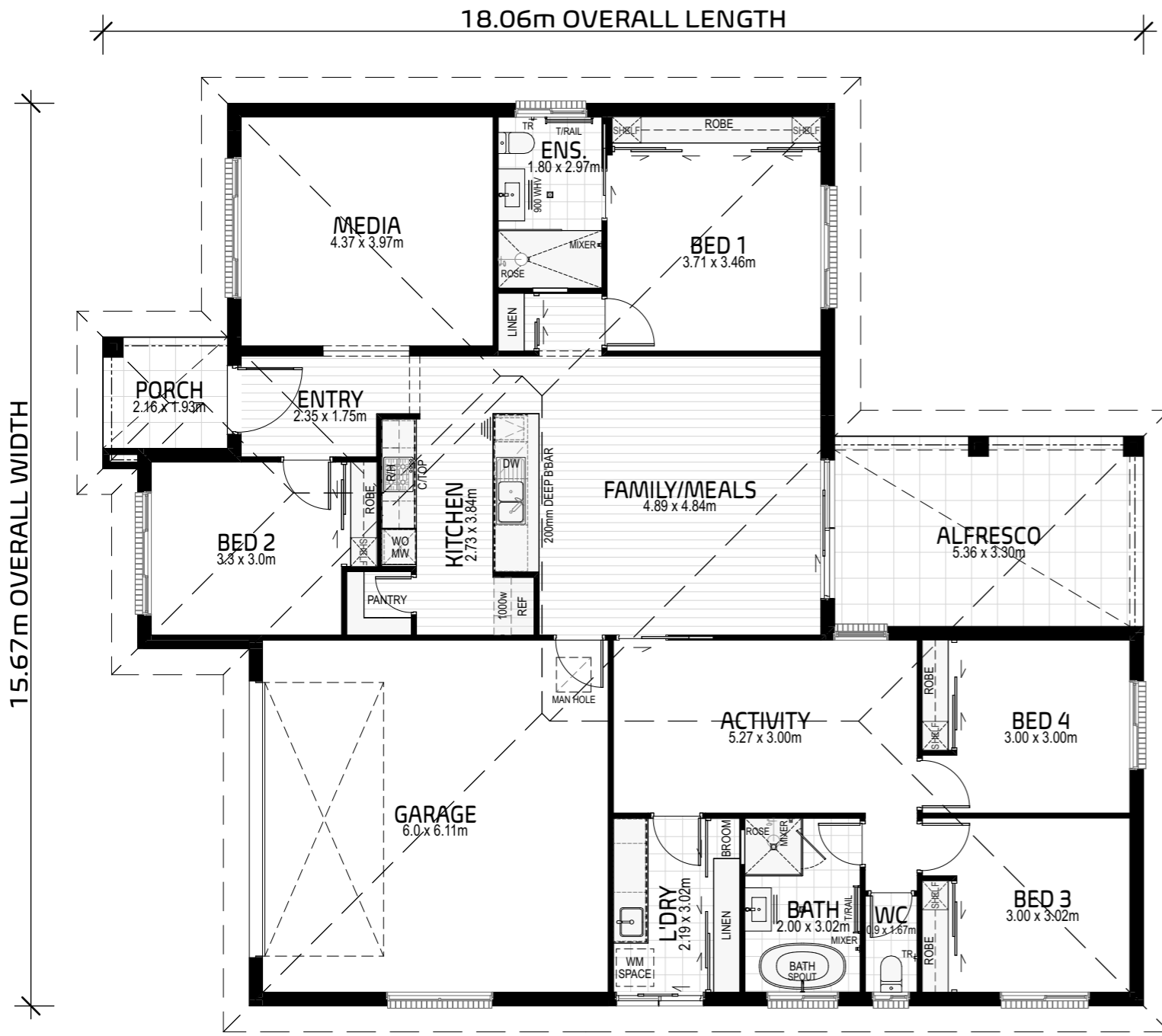
ALPHA 225 RP W03 LHG
SCALE 1:100

AREAS	
PORCH	4.38
LIVING	164.03
GARAGE	39.53
ALFRESCO	17.69
TOTAL	225.63 m²
PERIMETER	66.26 Lm



Address:
130 West High Street
Coffs Harbour NSW 2450
Hibbards P/L ABN 22 057 895 020
E: coffs@hibbards.com.au
P: (02) 6650 3300
F: (02) 6651 7044
W: www.hibbards.net.au

drawing title		ALPHA 225 LHG SALES PLAN	
JOB No.	0000	revision	A
SCALE	1:100 <small>printed to A3 size</small>	PAGE	S01
DRAWN	RG	DATE	23/2/2026
WIND	'N2'	SITE	



ALPHA 225 RHG FLOOR PLAN
SCALE 1:100



ALPHA 225 P W02 RHG
SCALE 1:100



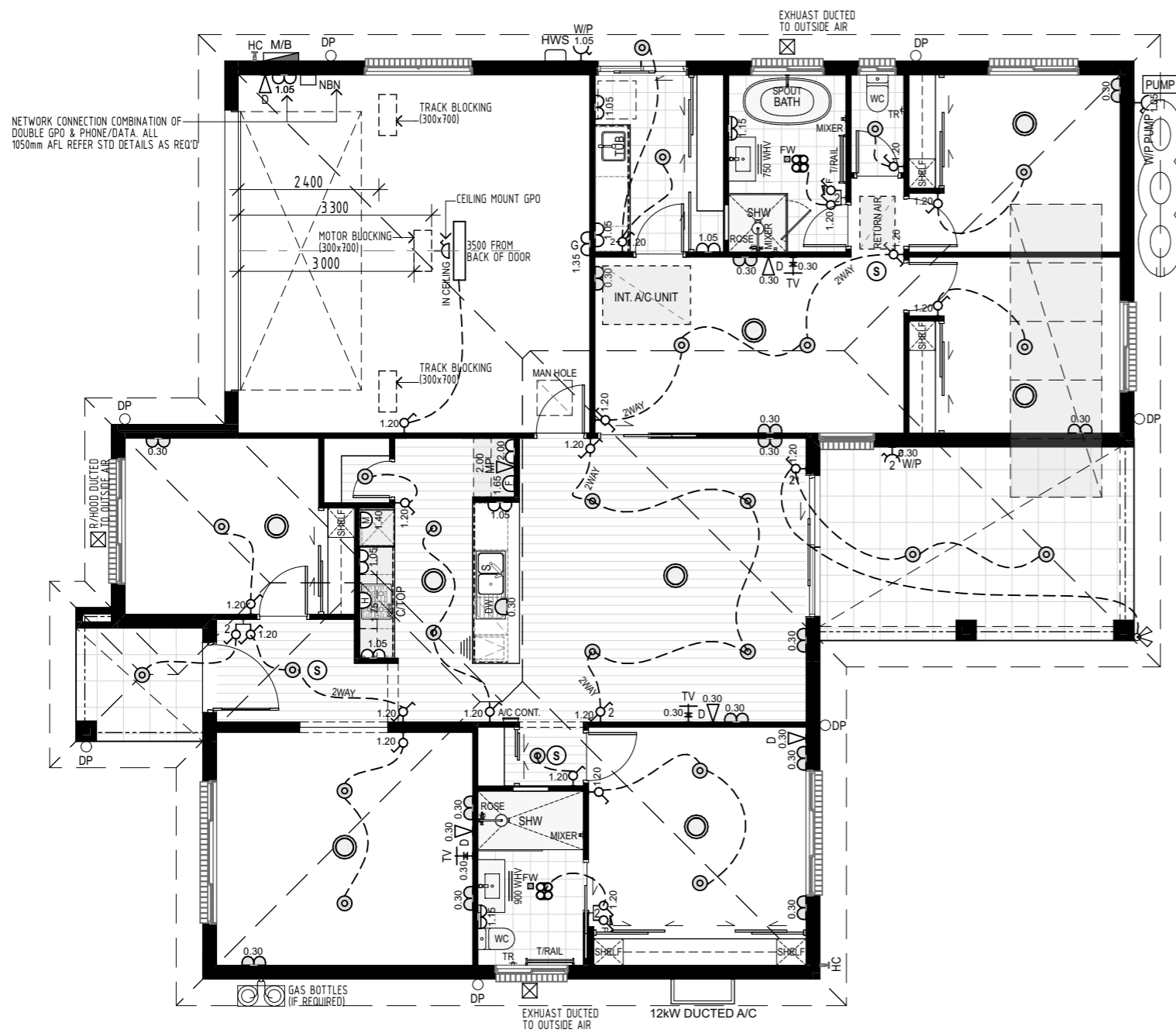
ALPHA 225 RP W03 RHG
SCALE 1:100

AREAS	
PORCH	4.38
LIVING	164.03
GARAGE	39.53
ALFRESCO	17.69
TOTAL	225.63 m²
PERIMETER	66.26 Lm



Address:
130 West High Street
Coffs Harbour NSW 2450
Hibbards P/L ABN 22 057 895 020
E:coffs@hibbards.com.au
P:(02) 6650 3300
F:(02) 6651 7044
W: www.hibbards.net.au

drawing title		ALPHA 225 RHG SALES PLAN	
JOB No.	0000	revision	A
SCALE	1:100 <small>printed to A3 size</small>	PAGE	S01
DRAWN	RG	DATE	23/2/2026
WIND	'N2'	SITE	



ALPHA 225 ELECTRICAL LAYOUT
SCALE 1:100

NOTE : PLEASE NOTIFY THE DRAFTING DEPARTMENT AT HIBBARDS HEAD OFFICE FOR ANY DISCREPANCIES IN DETAILS & DIMENSIONS

THIS IS A GENERIC ELECTRICAL PLAN ONLY. THE LAYOUT, LOCATION OF POINTS, LIGHTS AND OUTLETS SHOWN MAY ALTER WITHOUT NOTIFICATION, DUE TO COUNCIL REQUIREMENTS, BUILDING LOCATION AND/OR OTHER UNFORSEEN CIRCUMSTANCES

ALL PRODUCTS AND FINISHES AS PER BUILDERS SPECIFICATIONS

NOTE : ALL EXTERNAL LIGHTS WILL BE SHIELDED TO PREVENT LIGHT ABOVE HORIZONTAL

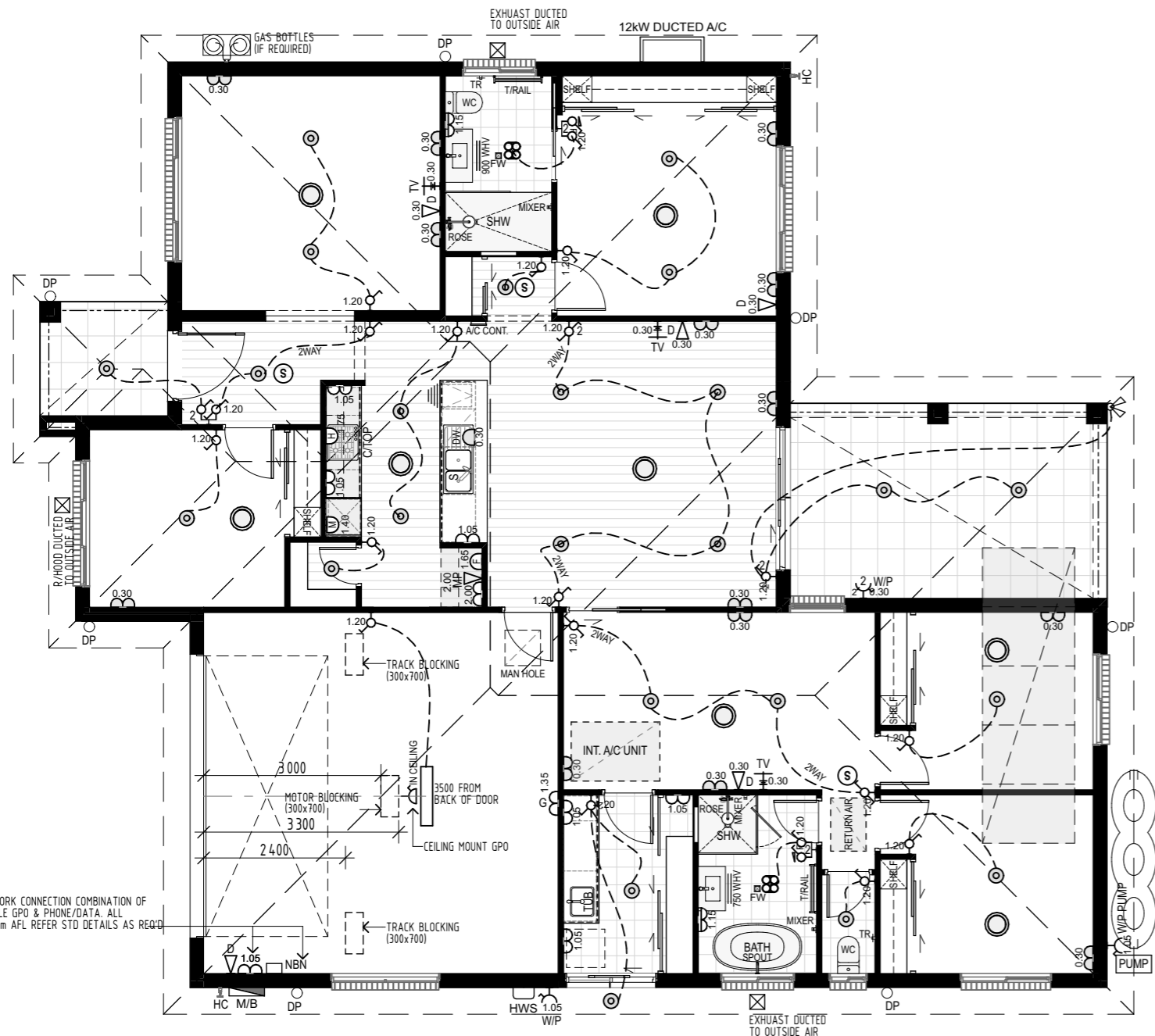
ELECTRICAL/LIGHTING SCHEDULE		
SYMBOL	DESCRIPTION	QUANTITY
⊗	3 HEATLAMP/LIGHT & EXHAUST FAN	2
⊗	A/C CONT.	1
⊙	A/C DIFFUSER	8
▽	DATA AT 300mm AFL	4
▽	DATA AT 1050mm AFL	1
⊗	DOUBLE GPO AT 300mm AFL	14
⊗	DOUBLE GPO AT 1050mm AFL	7
⊗	DOUBLE GPO AT 2000mm AFL	1
⊗	DOUBLE GPO-GARAGE AT 1350mm AFL	1
⊗	DOUBLE GPO-VANITY AT 1150mm AFL	2
⊗	DOUBLE SPOTLIGHT	1
⊗	DOUBLE WATERPROOF GPO AT 300mm AFL	1
⊙	DOWNLIGHT	24
⊗	DUCTED GRILL	3
⊗	FLURO LIGHT	1
▽	MODEM POINT AT 2000mm AFL	1
⊗	SINGLE GPO-CEILING MOUNT	1
⊗	SINGLE GPO-DISHWASHER AT 300mm AFL	1
⊗	SINGLE GPO-FRIDGE AT 1650mm AFL	1
⊗	SINGLE GPO-MICROWAVE AT 1400mm AFL	1
⊗	SINGLE GPO-R/HOOD AT 1750mm AFL	1
⊗	SINGLE WATERPROOF GPO AT 1050mm AFL	2
⊗	SMOKE ALARM	3
⊗	SWITCH - DOUBLE	2
⊗	SWITCH - DOUBLE (INC 2WAY)	1
⊗	SWITCH - DOUBLE (INC EXHAUST FAN)	2
⊗	SWITCH - SINGLE	10
⊗	SWITCH - SINGLE (2WAY)	5
⊗	TV AT 300mm AFL	3

HibbardHomes est 1968
FIRST NEXT INVEST

Address:
130 West High Street
Coffs Harbour NSW 2450

Hibbards P/L ABN 22 057 895 020
E:coffs@hibbards.com.au
P:(02) 6650 3300
F:(02) 6651 7044
W: www.hibbards.net.au

drawing title		ALPHA 225 LHG ELECTRICAL LAYOUT	
JOB No.	0000	revision	A
SCALE	1:100 <small>printed to A3 size</small>	PAGE	S02
DRAWN	RG	DATE	23/2/2026
WIND	'N2'	SITE	



ALPHA 225 ELECTRICAL LAYOUT
SCALE 1:100

NOTE : PLEASE NOTIFY THE DRAFTING DEPARTMENT AT HIBBARDS HEAD OFFICE FOR ANY DISCREPANCIES IN DETAILS & DIMENSIONS

THIS IS A GENERIC ELECTRICAL PLAN ONLY. THE LAYOUT, LOCATION OF POINTS, LIGHTS AND OUTLETS SHOWN MAY ALTER WITHOUT NOTIFICATION, DUE TO COUNCIL REQUIREMENTS, BUILDING LOCATION AND/OR OTHER UNFORSEEN CIRCUMSTANCES

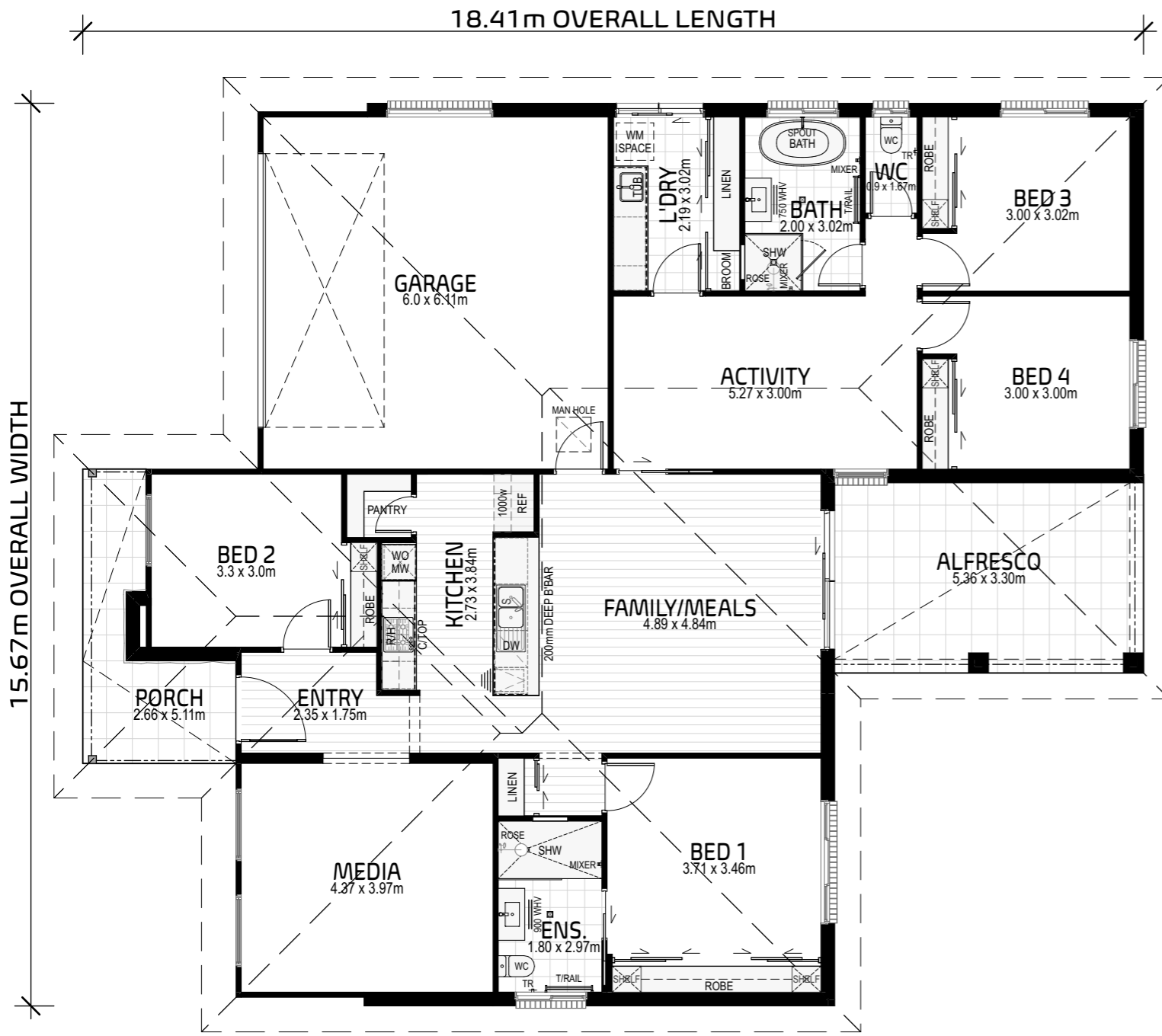
ALL PRODUCTS AND FINISHES AS PER BUILDERS SPECIFICATIONS

NOTE : ALL EXTERNAL LIGHTS WILL BE SHIELDED TO PREVENT LIGHT ABOVE HORIZONTAL

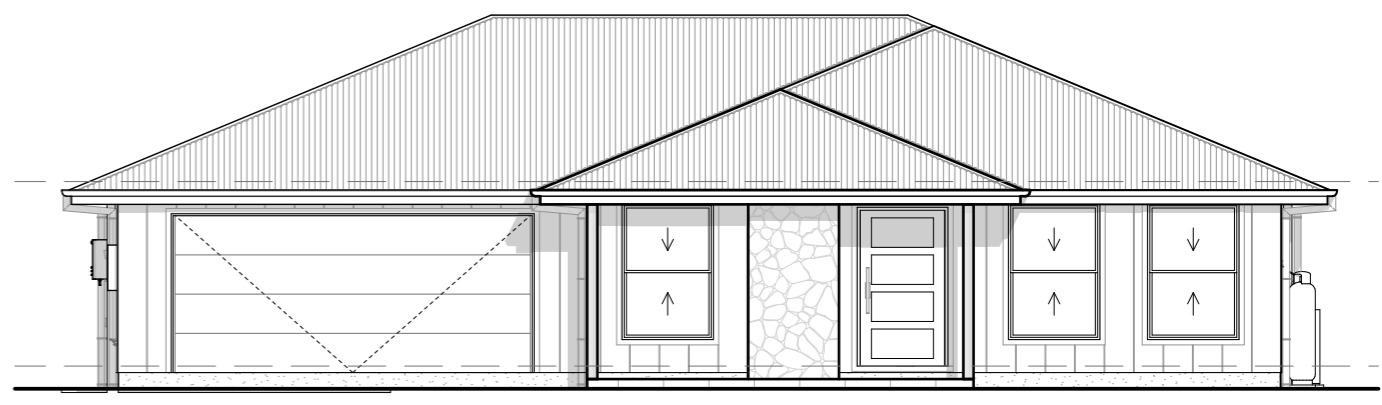
ELECTRICAL/LIGHTING SCHEDULE		
SYMBOL	DESCRIPTION	QUANTITY
⊗	3 HEATLAMP/LIGHT & EXHAUST FAN	2
A/C CONT.	A/C CONT.	1
⊙	A/C DIFFUSER	8
D 0.30	DATA AT 300mm AFL	4
D 1.05	DATA AT 1050mm AFL	1
D 0.30	DOUBLE GPO AT 300mm AFL	14
D 1.05	DOUBLE GPO AT 1050mm AFL	7
D 2.00	DOUBLE GPO AT 2000mm AFL	1
D 1.35	DOUBLE GPO-GARAGE AT 1350mm AFL	1
D 1.15	DOUBLE GPO-VANITY AT 1150mm AFL	2
⊗	DOUBLE SPOTLIGHT	1
W/P 0.30	DOUBLE WATERPROOF GPO AT 300mm AFL	1
⊙	DOWNLIGHT	24
⊗	DUCTED GRILL	3
▭	FLURO LIGHT	1
2.00	MODEM POINT AT 2000mm AFL	1
⊗	SINGLE GPO-CEILING MOUNT	1
DW 0.30	SINGLE GPO-DISHWASHER AT 300mm AFL	1
D 1.65	SINGLE GPO-FRIDGE AT 1650mm AFL	1
D 1.40	SINGLE GPO-MICROWAVE AT 1400mm AFL	1
D 1.75	SINGLE GPO-R/HOOD AT 1750mm AFL	1
D 1.05	SINGLE WATERPROOF GPO AT 1050mm AFL	2
⊙	SMOKE ALARM	3
1.20	SWITCH - DOUBLE	2
⊗ 1.20	SWITCH - DOUBLE (INC 2WAY)	1
⊗ 1.20	SWITCH - DOUBLE (INC EXHAUST FAN)	2
⊗ 1.20	SWITCH - SINGLE	10
⊗ 1.20	SWITCH - SINGLE (2WAY)	5
⊗ 0.30	TV AT 300mm AFL	3

HibbardHomes est 1968
 FIRST NEXT INVEST
 Address: 130 West High Street, Coffs Harbour NSW 2450
 Hibbards P/L ABN 22 057 895 020
 E: coffs@hibbards.com.au
 P: (02) 6650 3300
 F: (02) 6651 7044
 W: www.hibbards.net.au

drawing title		ALPHA 225 RHG ELECTRICAL LAYOUT	
JOB No.	0000	revision	A
SCALE	1:100 <small>printed to A3 size</small>	PAGE	S02
DRAWN	RG	DATE	23/2/2026
WIND	'N2'	SITE	



ALPHA 225 LHG FLOOR PLAN
SCALE 1:100



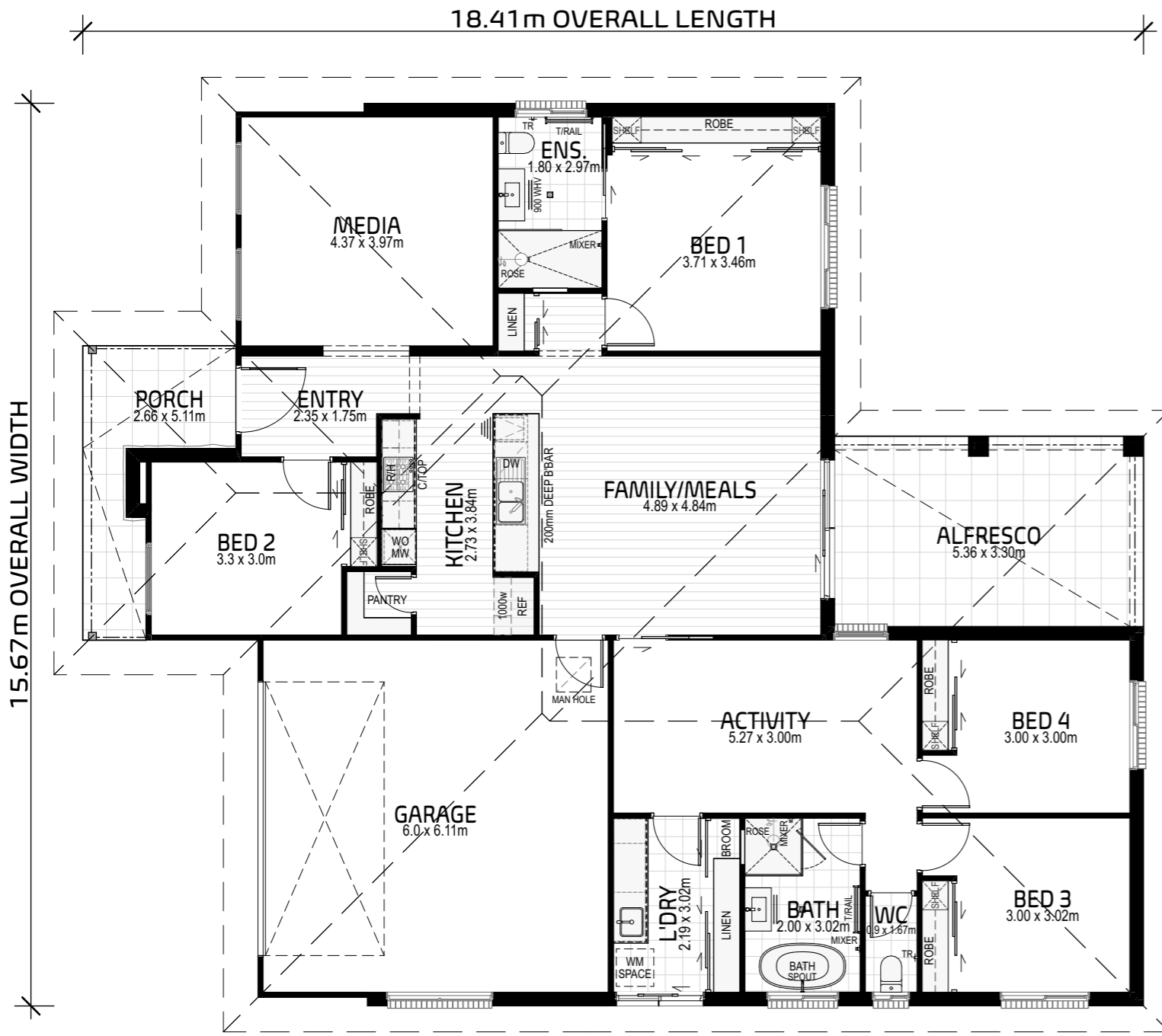
ALPHA 225 F-FARM WO3 LHG
SCALE 1:100

AREAS	
PORCH	7.98
LIVING	162.39
GARAGE	38.32
ALFRESCO	17.69
TOTAL	226.38 m²
PERIMETER	66.66 Lm

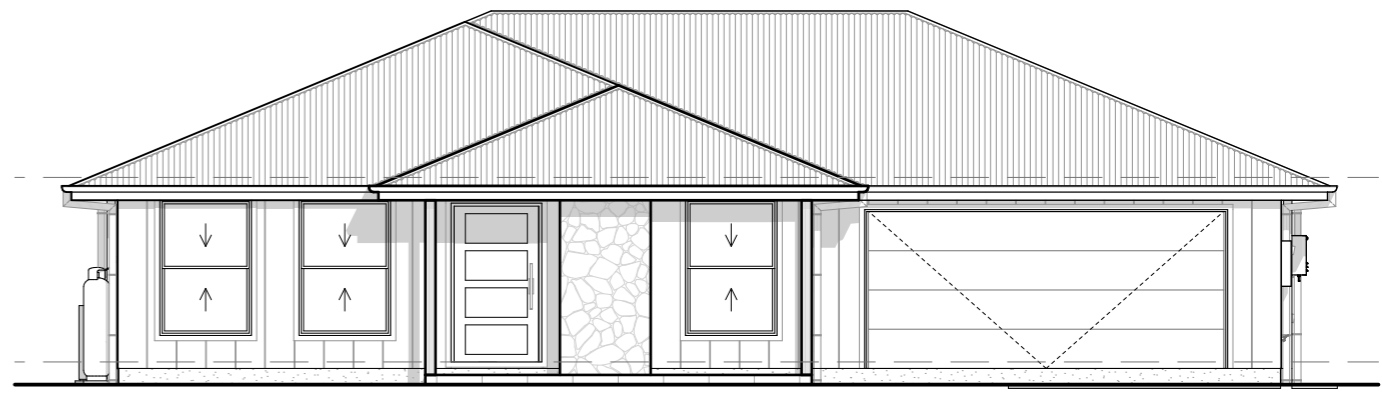


Address:
130 West High Street
Coffs Harbour NSW 2450
Hibbards P/L ABN 22 057 895 020
E:coffs@hibbards.com.au
P:(02) 6650 3300
F:(02) 6651 7044
W: www.hibbards.net.au

drawing title		ALPHA 225 F01-FARM LHG SALES PLAN	
JOB No.	0000	revision	A
SCALE	1:100 <small>printed to A3 size</small>		
DRAWN	RG		PAGE
DATE	23/2/2026		S03
WIND	'N2'	SITE	



ALPHA 225 RHG FLOOR PLAN
SCALE 1:100



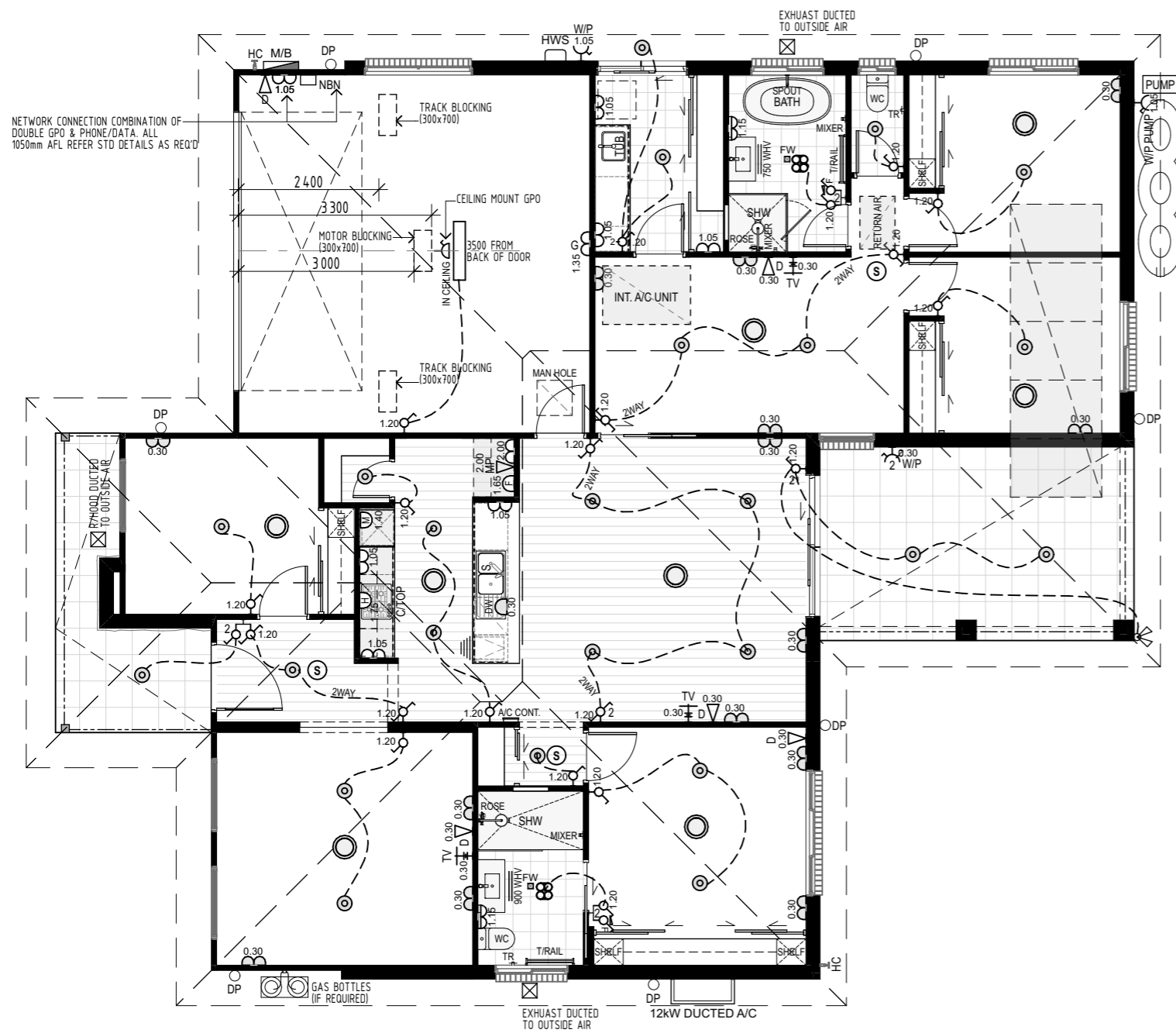
ALPHA 225 F-FARM W03 RHG
SCALE 1:100

AREAS	
PORCH	7.98
LIVING	162.39
GARAGE	38.32
ALFRESCO	17.69
TOTAL	226.38 m²
PERIMETER	66.66 Lm



Address:
130 West High Street
Coffs Harbour NSW 2450
Hibbards P/L ABN 22 057 895 020
E:coffs@hibbards.com.au
P:(02) 6650 3300
F:(02) 6651 7044
W: www.hibbards.net.au

drawing title	ALPHA 225 F01-FARM RHG SALES PLAN		
JOB No.	0000	revision	A
SCALE	1:100 <small>printed to A3 size</small>	PAGE	S03
DRAWN	RG	DATE	23/2/2026
WIND	'N2'	SITE	



ALPHA 225 F01-FARM ELECTRICAL LAYOUT
SCALE 1:100

NOTE : PLEASE NOTIFY THE DRAFTING DEPARTMENT AT HIBBARDS HEAD OFFICE FOR ANY DISCREPANCIES IN DETAILS & DIMENSIONS

THIS IS A GENERIC ELECTRICAL PLAN ONLY. THE LAYOUT, LOCATION OF POINTS, LIGHTS AND OUTLETS SHOWN MAY ALTER WITHOUT NOTIFICATION, DUE TO COUNCIL REQUIREMENTS, BUILDING LOCATION AND/OR OTHER UNFORSEEN CIRCUMSTANCES

ALL PRODUCTS AND FINISHES AS PER BUILDERS SPECIFICATIONS

NOTE : ALL EXTERNAL LIGHTS WILL BE SHIELDED TO PREVENT LIGHT ABOVE HORIZONTAL

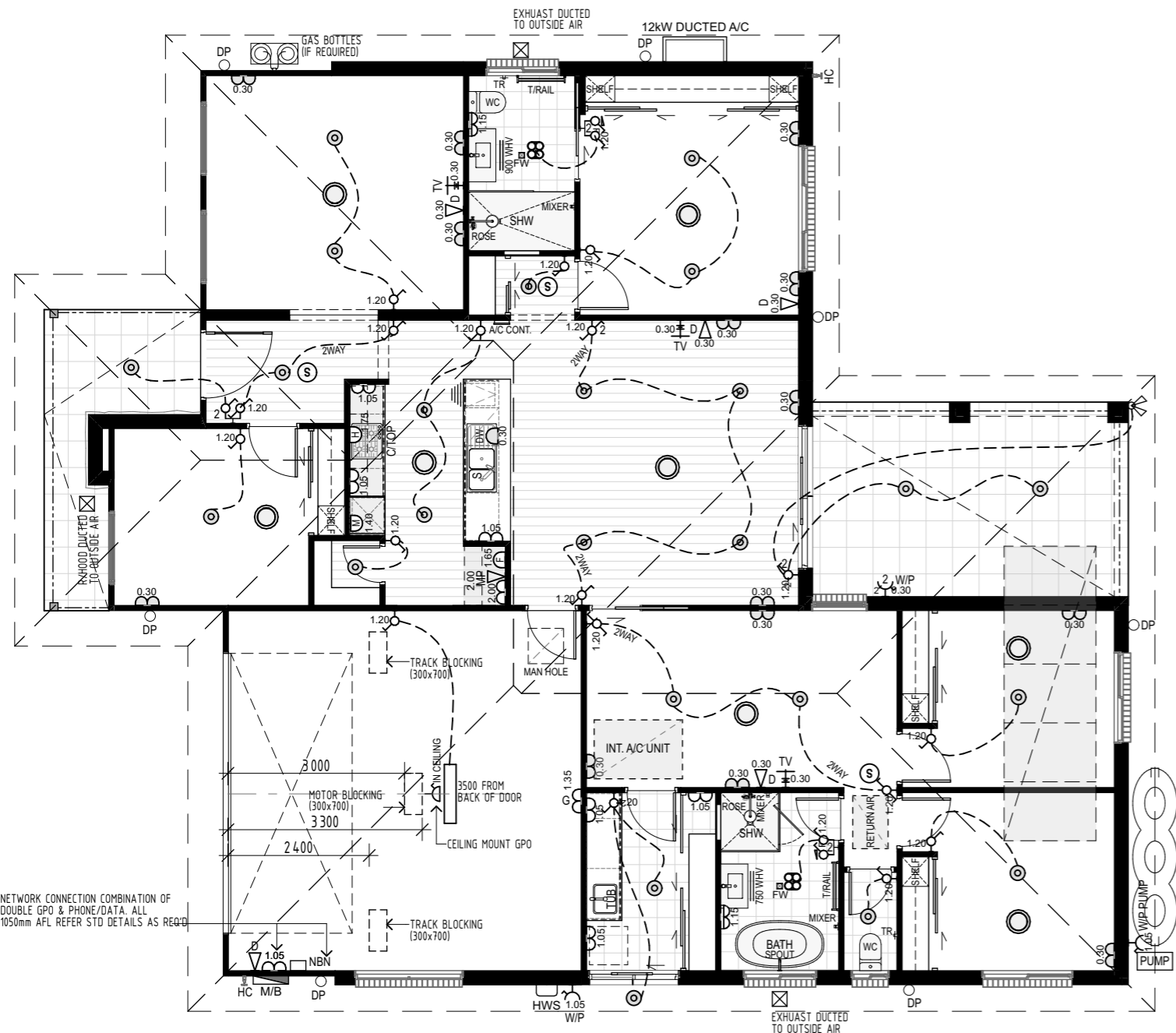
ELECTRICAL/LIGHTING SCHEDULE		
SYMBOL	DESCRIPTION	QUANTITY
	3 HEATLAMP/LIGHT & EXHAUST FAN	2
	A/C CONT.	1
	A/C DIFFUSER	8
	DATA AT 300mm AFL	4
	DATA AT 1050mm AFL	1
	DOUBLE GPO AT 300mm AFL	14
	DOUBLE GPO AT 1050mm AFL	7
	DOUBLE GPO AT 2000mm AFL	1
	DOUBLE GPO-GARAGE AT 1350mm AFL	1
	DOUBLE GPO-VANITY AT 1150mm AFL	2
	DOUBLE SPOTLIGHT	1
	DOUBLE WATERPROOF GPO AT 300mm AFL	1
	DOWNLIGHT	24
	DUCTED GRILL	3
	FLURO LIGHT	1
	MODEM POINT AT 2000mm AFL	1
	SINGLE GPO-CEILING MOUNT	1
	SINGLE GPO-DISHWASHER AT 300mm AFL	1
	SINGLE GPO-FRIDGE AT 1650mm AFL	1
	SINGLE GPO-MICROWAVE AT 1400mm AFL	1
	SINGLE GPO-R/HOOD AT 1750mm AFL	1
	SINGLE WATERPROOF GPO AT 1050mm AFL	2
	SMOKE ALARM	3
	SWITCH - DOUBLE	2
	SWITCH - DOUBLE (INC 2WAY)	1
	SWITCH - DOUBLE (INC EXHAUST FAN)	2
	SWITCH - SINGLE	10
	SWITCH - SINGLE (2WAY)	5
	TV AT 300mm AFL	3

HibbardHomes est 1968
FIRST NEXT INVEST

Address:
130 West High Street
Coffs Harbour NSW 2450

Hibbards P/L ABN 22 057 895 020
E:coffs@hibbards.com.au
P:(02) 6650 3300
F:(02) 6651 7044
W: www.hibbards.net.au

drawing title		ALPHA 225 F01-FARM LHG ELECTRICAL LAYOUT		
JOB No.	0000	revision	A	
SCALE	1:100 <small>printed to A3 size</small>	PAGE	S04	
DRAWN	RG	DATE	23/2/2026	
WIND	'N2'	SITE		



ALPHA 225 F01-FARM ELECTRICAL LAYOUT
SCALE 1:100

NOTE : PLEASE NOTIFY THE DRAFTING DEPARTMENT AT HIBBARDS HEAD OFFICE FOR ANY DISCREPANCIES IN DETAILS & DIMENSIONS

THIS IS A GENERIC ELECTRICAL PLAN ONLY. THE LAYOUT, LOCATION OF POINTS, LIGHTS AND OUTLETS SHOWN MAY ALTER WITHOUT NOTIFICATION, DUE TO COUNCIL REQUIREMENTS, BUILDING LOCATION AND/OR OTHER UNFORSEEN CIRCUMSTANCES

ALL PRODUCTS AND FINISHES AS PER BUILDERS SPECIFICATIONS

NOTE : ALL EXTERNAL LIGHTS WILL BE SHIELDED TO PREVENT LIGHT ABOVE HORIZONTAL

ELECTRICAL/LIGHTING SCHEDULE		
SYMBOL	DESCRIPTION	QUANTITY
⊗	3 HEATLAMP/LIGHT & EXHAUST FAN	2
A/C CONT.	A/C CONT.	1
⊙	A/C DIFFUSER	8
D ∇ ^{0.30}	DATA AT 300mm AFL	4
D ∇ ^{1.05}	DATA AT 1050mm AFL	1
D ∇ ^{0.30}	DOUBLE GPO AT 300mm AFL	14
D ∇ ^{1.05}	DOUBLE GPO AT 1050mm AFL	7
D ∇ ^{2.00}	DOUBLE GPO AT 2000mm AFL	1
D ∇ ^{G-1.35}	DOUBLE GPO-GARAGE AT 1350mm AFL	1
D ∇ ^{1.15}	DOUBLE GPO-VANITY AT 1150mm AFL	2
⊗	DOUBLE SPOTLIGHT	1
W/P ∇ ^{2-1.30}	DOUBLE WATERPROOF GPO AT 300mm AFL	1
⊙	DOWNLIGHT	24
⊗	DUCTED GRILL	3
▭	FLURO LIGHT	1
∇ ^{2.00}	MODEM POINT AT 2000mm AFL	1
⊗	SINGLE GPO-CEILING MOUNT	1
DW ∇ ^{0.30}	SINGLE GPO-DISHWASHER AT 300mm AFL	1
D ∇ ^{1.65}	SINGLE GPO-FRIDGE AT 1650mm AFL	1
D ∇ ^{1.40}	SINGLE GPO-MICROWAVE AT 1400mm AFL	1
D ∇ ^{1.75}	SINGLE GPO-R/HOOD AT 1750mm AFL	1
D ∇ ^{1.05}	SINGLE WATERPROOF GPO AT 1050mm AFL	2
⊙	SMOKE ALARM	3
⊗ ^{1.20}	SWITCH - DOUBLE	2
⊗ ^{1.20}	SWITCH - DOUBLE (INC 2WAY)	1
⊗ ^{1.20}	SWITCH - DOUBLE (INC EXHAUST FAN)	2
⊗ ^{1.20}	SWITCH - SINGLE	10
⊗ ^{1.20}	SWITCH - SINGLE (2WAY)	5
⊗ ^{0.30}	TV AT 300mm AFL	3

HibbardHomes est 1968
FIRST NEXT INVEST

Address:
130 West High Street
Coffs Harbour NSW 2450
Hibbards P/L ABN 22 057 895 020
E:coffs@hibbards.com.au
P:(02) 6650 3300
F:(02) 6651 7044
W: www.hibbards.net.au

drawing title		ALPHA 225 F01-FARM RHG ELECTRICAL LAYOUT	
JOB No.	0000	revision	A
SCALE	1:100 <small>printed to A3 size</small>	PAGE	S04
DRAWN	RG	DATE	23/2/2026
WIND	'N2'	SITE	